

**Anti-LAG3 / CD223 Reference Antibody (ieramilimab)
Recombinant Antibody
Catalog # APR10498**

Specification

Anti-LAG3 / CD223 Reference Antibody (ieramilimab) - Product Information

Application	FC, E, FTA
Primary Accession	P18627
Reactivity	Cynomolgus, Human
Clonality	Monoclonal
Isotype	IgG4SP
Calculated MW	146.78 KDa

Anti-LAG3 / CD223 Reference Antibody (ieramilimab) - Additional Information

Target/Specificity
LAG3 / CD223

Endotoxin
< 0.001EU/ µg,determined by LAL method.

Conjugation
Unconjugated

Expression system
CHO Cell

Format
Purified monoclonal antibody supplied in PBS, pH6.0, without preservative.This antibody is purified through a protein A column.

Anti-LAG3 / CD223 Reference Antibody (ieramilimab) - Protein Information

Name LAG3 ([HGNC:6476](#))

Synonyms FDC

Function
Lymphocyte activation gene 3 protein: Inhibitory receptor on antigen activated T-cells (PubMed:20421648, PubMed:7805750, PubMed:8647185). Delivers inhibitory signals upon binding to ligands, such as FGL1 (By similarity). FGL1 constitutes a major ligand of LAG3 and is responsible for LAG3 T-cell inhibitory function (By similarity). Following TCR engagement, LAG3 associates with CD3-TCR in the immunological synapse and directly inhibits T-cell activation (By similarity). May inhibit antigen-specific T-cell activation in synergy with PDCD1/PD-1, possibly by acting as a coreceptor for PDCD1/PD-1 (By similarity). Negatively regulates the proliferation, activation, effector function and homeostasis of both CD8(+) and

CD4(+) T-cells (PubMed:20421648, PubMed:7805750, PubMed:8647185). Also mediates immune tolerance: constitutively expressed on a subset of regulatory T-cells (Tregs) and contributes to their suppressive function (By similarity). Also acts as a negative regulator of plasmacytoid dendritic cell (pDCs) activation (By similarity). Binds MHC class II (MHC-II); the precise role of MHC-II-binding is however unclear (PubMed:8647185).

Cellular Location

[Lymphocyte activation gene 3 protein]: Cell membrane; Single-pass type I membrane protein

Tissue Location

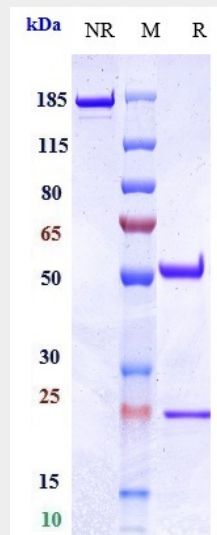
Primarily expressed in activated T-cells and a subset of natural killer (NK) cells.

Anti-LAG3 / CD223 Reference Antibody (ieramilimab) - Protocols

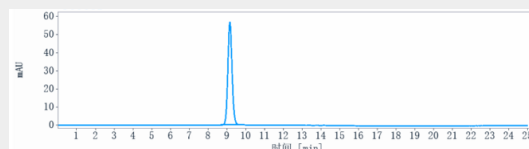
Provided below are standard protocols that you may find useful for product applications.

- [Western Blot](#)
- [Blocking Peptides](#)
- [Dot Blot](#)
- [Immunohistochemistry](#)
- [Immunofluorescence](#)
- [Immunoprecipitation](#)
- [Flow Cytometry](#)
- [Cell Culture](#)

Anti-LAG3 / CD223 Reference Antibody (ieramilimab) - Images



Anti-LAG3 / CD223 Reference Antibody (ieramilimab) on SDS-PAGE under reducing (R) condition. The gel was stained with Coomassie Blue. The purity of the protein is greater than 95%



The purity of Anti-LAG3 / CD223 Reference Antibody (ieramilimab) is more than 95% ,determined by SEC-HPLC.