

**Anti-IL-1RL2 / IL-36R Reference Antibody (imsidolimab)
Recombinant Antibody
Catalog # APR10497**

Specification

Anti-IL-1RL2 / IL-36R Reference Antibody (imsidolimab) - Product Information

Application	FC, E, FTA
Primary Accession	O9HB29
Reactivity	Cynomolgus, Human
Clonality	Monoclonal
Isotype	IgG4
Calculated MW	146.6 KDa

Anti-IL-1RL2 / IL-36R Reference Antibody (imsidolimab) - Additional Information

Target/Specificity
IL-1RL2 / IL-36R

Endotoxin
< 0.001EU/ µg,determined by LAL method.

Conjugation
Unconjugated

Expression system
CHO Cell

Format
Purified monoclonal antibody supplied in PBS, pH6.0, without preservative.This antibody is purified through a protein A column.

Storage
-80°C for 2 years under sterile conditions □ -20°C for 1 year under sterile conditions □Avoid repeated freeze-thaw cycles.

Anti-IL-1RL2 / IL-36R Reference Antibody (imsidolimab) - Protein Information

Name IL1RL2

Synonyms IL1RRP2

Function
Receptor for interleukin-36 (IL36A, IL36B and IL36G). After binding to interleukin-36 associates with the coreceptor IL1RAP to form the interleukin-36 receptor complex which mediates interleukin-36- dependent activation of NF-kappa-B, MAPK and other pathways (By similarity). The IL-36 signaling system is thought to be present in epithelial barriers and to take part in local inflammatory response; it is similar to the IL-1 system. Seems to be involved in skin inflammatory response by induction of the IL-23/IL-17/IL-22 pathway.

Cellular Location

Membrane; Single-pass type I membrane protein

Tissue Location

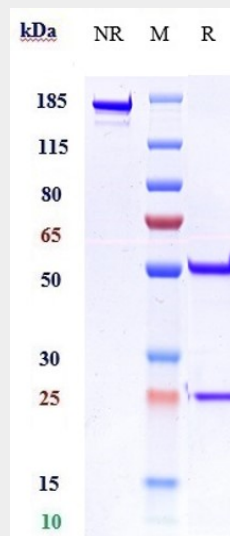
Expressed in synovial fibroblasts and articular chondrocytes. Expressed in keratinocytes and monocyte-derived dendritic cells. Expressed in monocytes and myeloid dendritic cells; at protein level.

Anti-IL-1RL2 / IL-36R Reference Antibody (imsidolimab) - Protocols

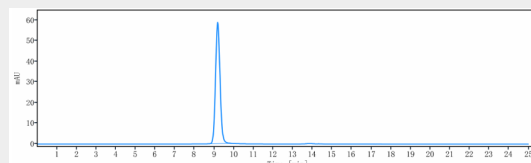
Provided below are standard protocols that you may find useful for product applications.

- [Western Blot](#)
- [Blocking Peptides](#)
- [Dot Blot](#)
- [Immunohistochemistry](#)
- [Immunofluorescence](#)
- [Immunoprecipitation](#)

Anti-IL-1RL2 / IL-36R Reference Antibody (imsidolimab) - Images



Anti-IL-1RL2 / IL-36R Reference Antibody (imsidolimab) on SDS-PAGE under reducing (R) condition. The gel was stained with Coomassie Blue. The purity of the protein is greater than 95%



The purity of Anti-IL-1RL2 / IL-36R Reference Antibody (imsidolimab) is more than 95%, determined by SEC-HPLC.