

**Anti-KIR Reference Antibody (lirilumab)
Recombinant Antibody
Catalog # APR10496**

Specification

Anti-KIR Reference Antibody (lirilumab) - Product Information

Application	FC, E, FTA
Primary Accession	P55040
Reactivity	Cynomolgus, Human, Mouse
Clonality	Monoclonal
Isotype	IgG4
Calculated MW	145.52 KDa

Anti-KIR Reference Antibody (lirilumab) - Additional Information

Target/Specificity

KIR

Endotoxin

< 0.001EU/ µg,determined by LAL method.

Conjugation

Unconjugated

Expression system

CHO Cell

Format

Purified monoclonal antibody supplied in PBS, pH6.0, without preservative.This antibody is purified through a protein A column.

Anti-KIR Reference Antibody (lirilumab) - Protein Information

Name GEM

Synonyms KIR

Function

Could be a regulatory protein, possibly participating in receptor-mediated signal transduction at the plasma membrane. Has guanine nucleotide-binding activity but undetectable intrinsic GTPase activity.

Cellular Location

Cell membrane; Peripheral membrane protein; Cytoplasmic side

Tissue Location

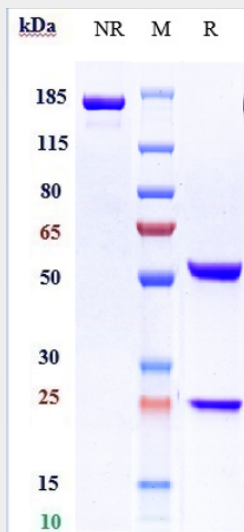
Most abundant in thymus, spleen, kidney, lung, and testis. Less abundant in heart, brain, liver and skeletal muscle

Anti-KIR Reference Antibody (lirilumab) - Protocols

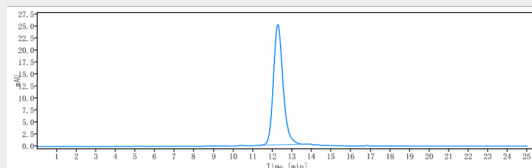
Provided below are standard protocols that you may find useful for product applications.

- [Western Blot](#)
- [Blocking Peptides](#)
- [Dot Blot](#)
- [Immunohistochemistry](#)
- [Immunofluorescence](#)
- [Immunoprecipitation](#)
- [Flow Cytometry](#)
- [Cell Culture](#)

Anti-KIR Reference Antibody (lirilumab) - Images



Anti-KIR Reference Antibody (lirilumab) on SDS-PAGE under reducing (R) condition. The gel was stained with Coomassie Blue. The purity of the protein is greater than 95%



The purity of Anti-KIR Reference Antibody (lirilumab) is more than 100% ,determined by SEC-HPLC.