

Anti-KLK2 / Kallikrein 2 Reference Antibody (JNJ-69086420)
Recombinant Antibody
Catalog # APR10491**Specification**

Anti-KLK2 / Kallikrein 2 Reference Antibody (JNJ-69086420) - Product Information

Application	FC, E, FTA
Primary Accession	P20151
Reactivity	Cynomolgus, Human
Clonality	Monoclonal
Isotype	IgG1
Calculated MW	145.3 KDa

Anti-KLK2 / Kallikrein 2 Reference Antibody (JNJ-69086420) - Additional Information**Target/Specificity**

KLK2 / Kallikrein 2

Endotoxin

< 0.001EU/ µg, determined by LAL method.

Conjugation

Unconjugated

Expression system

CHO Cell

Format

Purified monoclonal antibody supplied in PBS, pH6.0, without preservative. This antibody is purified through a protein A column.

Anti-KLK2 / Kallikrein 2 Reference Antibody (JNJ-69086420) - Protein Information**Name** KLK2**Function**

Glandular kallikreins cleave Met-Lys and Arg-Ser bonds in kininogen to release Lys-bradykinin.

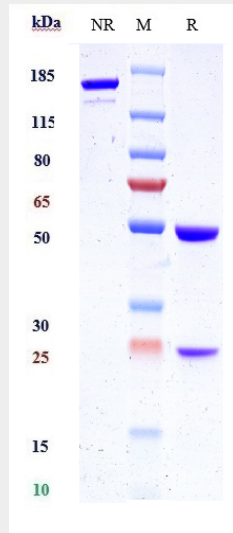
Anti-KLK2 / Kallikrein 2 Reference Antibody (JNJ-69086420) - Protocols

Provided below are standard protocols that you may find useful for product applications.

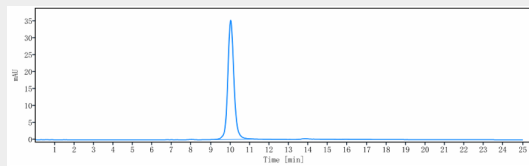
- [Western Blot](#)
- [Blocking Peptides](#)
- [Dot Blot](#)
- [Immunohistochemistry](#)

- [Immunofluorescence](#)
- [Immunoprecipitation](#)
- [Flow Cytometry](#)
- [Cell Culture](#)

Anti-KLK2 / Kallikrein 2 Reference Antibody (JNJ-69086420) - Images



Anti-KLK2 / Kallikrein 2 Reference Antibody (JNJ-69086420) on SDS-PAGE under reducing (R) condition. The gel was stained with Coomassie Blue. The purity of the protein is greater than 95%



The purity of Anti-KLK2 / Kallikrein 2 Reference Antibody (JNJ-69086420) is more than 100% ,determined by SEC-HPLC.