

Anti-TSHR Reference Antibody (K1-70)
Recombinant Antibody
Catalog # APR10488**Specification**

Anti-TSHR Reference Antibody (K1-70) - Product Information

Application	FC, E, FTA
Primary Accession	P16473
Reactivity	Human
Clonality	Monoclonal
Isotype	IgG1
Calculated MW	143.54 KDa

Anti-TSHR Reference Antibody (K1-70) - Additional Information**Target/Specificity**
TSHR**Endotoxin**
< 0.001EU/ µg,determined by LAL method.**Conjugation**
Unconjugated**Expression system**
CHO Cell**Format**
Purified monoclonal antibody supplied in PBS, pH6.0, without preservative.This antibody is purified through a protein A column.**Anti-TSHR Reference Antibody (K1-70) - Protein Information****Name** TSHR**Synonyms** LGR3**Function**
Receptor for the thyroid-stimulating hormone (TSH) or thyrotropin (PubMed:11847099, PubMed:12045258). Also acts as a receptor for the heterodimeric glycoprotein hormone (GPHA2:GPHB5) or thyrostimulin (PubMed:12045258). The activity of this receptor is mediated by G proteins which activate adenylate cyclase (PubMed:11847099). Plays a central role in controlling thyroid cell metabolism (By similarity).**Cellular Location**

Cell membrane; Multi-pass membrane protein. Basolateral cell membrane; Multi-pass membrane protein

Tissue Location

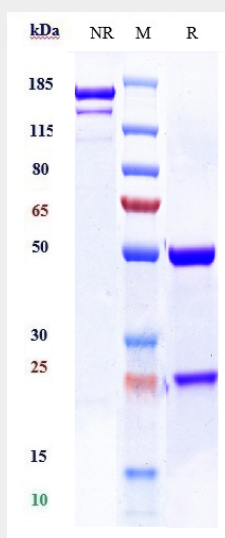
Expressed in thyroid cells (at protein level) (PubMed:11847099). Expressed in the thyroid (PubMed:2610690)

Anti-TSHR Reference Antibody (K1-70) - Protocols

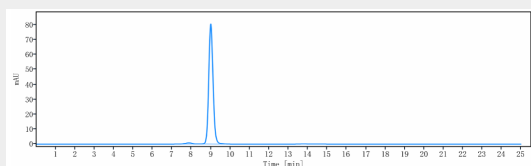
Provided below are standard protocols that you may find useful for product applications.

- [Western Blot](#)
- [Blocking Peptides](#)
- [Dot Blot](#)
- [Immunohistochemistry](#)
- [Immunofluorescence](#)
- [Immunoprecipitation](#)
- [Flow Cytometry](#)
- [Cell Culture](#)

Anti-TSHR Reference Antibody (K1-70) - Images



Anti-TSHR Reference Antibody (K1-70) on SDS-PAGE under reducing (R) condition. The gel was stained with Coomassie Blue. The purity of the protein is greater than 95%



The purity of Anti-TSHR Reference Antibody (K1-70) is more than 98.3% ,determined by SEC-HPLC.