

**Anti-Fibronectin Reference Antibody (radretumab)  
Recombinant Antibody  
Catalog # APR10479****Specification**

---

**Anti-Fibronectin Reference Antibody (radretumab) - Product Information**

Application	FC, E, FTA
Primary Accession	<a href="#">P02751</a>
Reactivity	Human, Mouse
Clonality	Monoclonal
Isotype	IgG1
Calculated MW	144.2 KDa

**Anti-Fibronectin Reference Antibody (radretumab) - Additional Information****Target/Specificity**  
Fibronectin**Endotoxin**  
< 0.001EU/ µg, determined by LAL method.**Conjugation**  
Unconjugated**Expression system**  
CHO Cell**Format**  
Purified monoclonal antibody supplied in PBS, pH6.0, without preservative. This antibody is purified through a protein A column.**Anti-Fibronectin Reference Antibody (radretumab) - Protein Information****Name** FN1 ([HGNC:3778](#))**Synonyms** FN**Function**

Fibronectins bind cell surfaces and various compounds including collagen, fibrin, heparin, DNA, and actin (PubMed: [3024962](http://www.uniprot.org/citations/3024962), PubMed: [3593230](http://www.uniprot.org/citations/3593230), PubMed: [3900070](http://www.uniprot.org/citations/3900070), PubMed: [7989369](http://www.uniprot.org/citations/7989369)). Fibronectins are involved in cell adhesion, cell motility, opsonization, wound healing, and maintenance of cell shape (PubMed: [3024962](http://www.uniprot.org/citations/3024962), PubMed: [3593230](http://www.uniprot.org/citations/3593230), PubMed: [3900070](http://www.uniprot.org/citations/3900070), PubMed: [7989369](http://www.uniprot.org/citations/7989369)).

[7989369](http://www.uniprot.org/citations/7989369)). Involved in osteoblast compaction through the fibronectin fibrillogenesis cell-mediated matrix assembly process, essential for osteoblast mineralization (By similarity). Participates in the regulation of type I collagen deposition by osteoblasts (By similarity). Acts as a ligand for the LILRB4 receptor, inhibiting FCGR1A/CD64-mediated monocyte activation (PubMed:[34089617](http://www.uniprot.org/citations/34089617)).

#### Cellular Location

Secreted, extracellular space, extracellular matrix. Secreted {ECO:0000250|UniProtKB:P11276}

#### Tissue Location

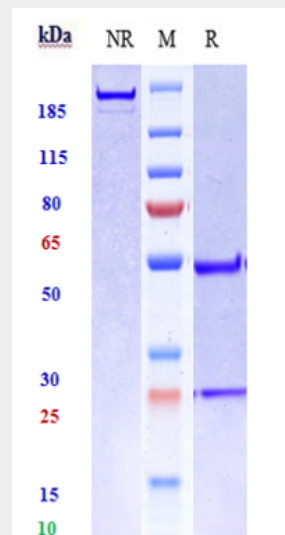
Expressed in the inner limiting membrane and around blood vessels in the retina (at protein level) (PubMed:29777959) Plasma FN (soluble dimeric form) is secreted by hepatocytes. Cellular FN (dimeric or cross-linked multimeric forms), made by fibroblasts, epithelial and other cell types, is deposited as fibrils in the extracellular matrix. Ugl-Y1, Ugl-Y2 and Ugl-Y3 are found in urine (PubMed:17614963).

### Anti-Fibronectin Reference Antibody (radretumab) - Protocols

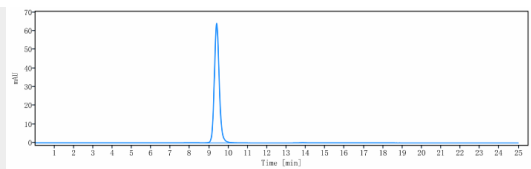
Provided below are standard protocols that you may find useful for product applications.

- [Western Blot](#)
- [Blocking Peptides](#)
- [Dot Blot](#)
- [Immunohistochemistry](#)
- [Immunofluorescence](#)
- [Immunoprecipitation](#)
- [Flow Cytometry](#)
- [Cell Culture](#)

### Anti-Fibronectin Reference Antibody (radretumab) - Images



Anti-Fibronectin Reference Antibody (radretumab) on SDS-PAGE under reducing (R) condition. The gel was stained with Coomassie Blue. The purity of the protein is greater than 95%



The purity of Anti-Fibronectin Reference Antibody (radretumab) is more than 95% ,determined by SEC-HPLC.