

**Anti-S100A4 Reference Antibody (LK-1)**  
**Recombinant Antibody**  
**Catalog # APR10469**

**Specification**

---

**Anti-S100A4 Reference Antibody (LK-1) - Product Information**

Application	FC, E, FTA
Primary Accession	<a href="#">P26447</a>
Reactivity	Human, Mouse
Clonality	Monoclonal
Isotype	IgG1
Calculated MW	150 KDa

**Anti-S100A4 Reference Antibody (LK-1) - Additional Information**

**Target/Specificity**  
S100A4

**Endotoxin**  
< 0.001EU/ µg, determined by LAL method.

**Conjugation**  
Unconjugated

**Expression system**  
CHO Cell

**Format**  
Purified monoclonal antibody supplied in PBS, pH6.0, without preservative. This antibody is purified through a protein A column.

**Anti-S100A4 Reference Antibody (LK-1) - Protein Information**

**Name** S100A4

**Synonyms** CAPL, MTS1

**Function**  
Calcium-binding protein that plays a role in various cellular processes including motility, angiogenesis, cell differentiation, apoptosis, and autophagy (PubMed: [16707441](http://www.uniprot.org/citations/16707441), PubMed: [23752197](http://www.uniprot.org/citations/23752197), PubMed: [30713770](http://www.uniprot.org/citations/30713770)). Increases cell motility and invasiveness by interacting with non-muscle myosin heavy chain (NMMHC) IIA/MYH9 (PubMed: [16707441](http://www.uniprot.org/citations/16707441)). Mechanistically, promotes filament depolymerization and increases the amount of soluble myosin-IIA, resulting in the formation of stable protrusions facilitating chemotaxis (By similarity). Modulates also the pro-apoptotic function of TP53 by

binding to its C-terminal transactivation domain within the nucleus and reducing its protein levels (PubMed:<a href="http://www.uniprot.org/citations/23752197" target="\_blank">23752197</a>). Within the extracellular space, stimulates cytokine production including granulocyte colony-stimulating factor and CCL24 from T-lymphocytes (By similarity). In addition, stimulates T-lymphocyte chemotaxis by acting as a chemoattractant complex with PGLYRP1 that promotes lymphocyte migration via CCR5 and CXCR3 receptors (PubMed:<a href="http://www.uniprot.org/citations/26654597" target="\_blank">26654597</a>, PubMed:<a href="http://www.uniprot.org/citations/30713770" target="\_blank">30713770</a>).

#### Cellular Location

Secreted. Nucleus Cytoplasm {ECO:0000250|UniProtKB:P07091}

#### Tissue Location

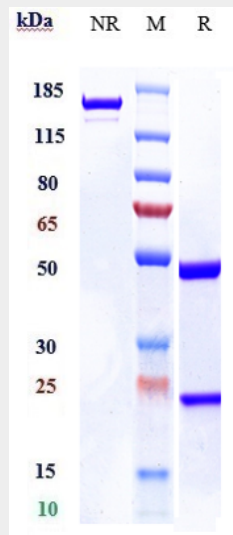
Ubiquitously expressed.

### Anti-S100A4 Reference Antibody (LK-1) - Protocols

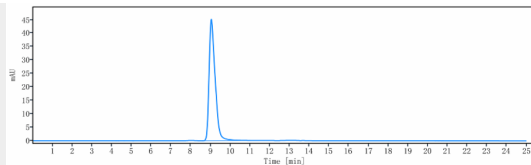
Provided below are standard protocols that you may find useful for product applications.

- [Western Blot](#)
- [Blocking Peptides](#)
- [Dot Blot](#)
- [Immunohistochemistry](#)
- [Immunofluorescence](#)
- [Immunoprecipitation](#)
- [Flow Cytometry](#)
- [Cell Culture](#)

### Anti-S100A4 Reference Antibody (LK-1) - Images



Anti-S100A4 Reference Antibody (LK-1) on SDS-PAGE under reducing (R) condition. The gel was stained with Coomassie Blue. The purity of the protein is greater than 90%



The purity of Anti-S100A4 Reference Antibody (LK-1) is more than 95% ,determined by SEC-HPLC.