

**Anti-TNFSF13B / BAFF / CD257 Reference Antibody (tabalumab)  
Recombinant Antibody  
Catalog # APR10464****Specification**

---

**Anti-TNFSF13B / BAFF / CD257 Reference Antibody (tabalumab) - Product Information**

Application	FC, E, FTA
Primary Accession	<a href="#">O9Y275</a>
Reactivity	Human, Mouse
Clonality	Monoclonal
Isotype	IgG4SP
Calculated MW	145 KDa

**Anti-TNFSF13B / BAFF / CD257 Reference Antibody (tabalumab) - Additional Information****Target/Specificity**

TNFSF13B / BAFF / CD257

**Endotoxin**

&lt; 0.001EU/ µg, determined by LAL method.

**Conjugation**

Unconjugated

**Expression system**

CHO Cell

**Format**

Purified monoclonal antibody supplied in PBS, pH6.0, without preservative. This antibody is purified through a protein A column.

**Storage**

-80°C for 2 years under sterile conditions □ -20°C for 1 year under sterile conditions □ Avoid repeated freeze-thaw cycles.

**Anti-TNFSF13B / BAFF / CD257 Reference Antibody (tabalumab) - Protein Information****Name** TNFSF13B**Synonyms** BAFF, BLYS, TALL1, TNFSF20, ZTNF4**Function**

Cytokine that binds to TNFRSF13B/TACI and TNFRSF17/BCMA. TNFSF13/APRIL binds to the same 2 receptors. Together, they form a 2 ligands -2 receptors pathway involved in the stimulation of B- and T- cell function and the regulation of humoral immunity. A third B-cell specific BAFF-receptor (BAFFR/BR3) promotes the survival of mature B- cells and the B-cell response.

**Cellular Location**

Cell membrane; Single-pass type II membrane protein

#### Tissue Location

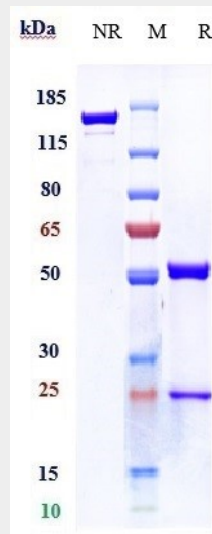
Abundantly expressed in peripheral blood Leukocytes and is specifically expressed in monocytes and macrophages. Also found in the spleen, lymph node, bone marrow, T-cells and dendritic cells. A lower expression seen in placenta, heart, lung, fetal liver, thymus, and pancreas. Isoform 2 is expressed in many myeloid cell lines

#### Anti-TNFSF13B / BAFF / CD257 Reference Antibody (tabalumab) - Protocols

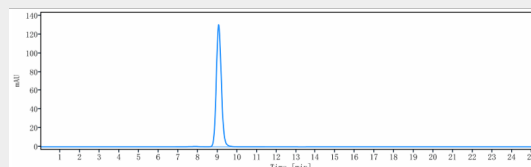
Provided below are standard protocols that you may find useful for product applications.

- [Western Blot](#)
- [Blocking Peptides](#)
- [Dot Blot](#)
- [Immunohistochemistry](#)
- [Immunofluorescence](#)
- [Immunoprecipitation](#)
- [Flow Cytometry](#)
- [Cell Culture](#)

#### Anti-TNFSF13B / BAFF / CD257 Reference Antibody (tabalumab) - Images



Anti-TNFSF13B / BAFF / CD257 Reference Antibody (tabalumab) on SDS-PAGE under reducing (R) condition. The gel was stained with Coomassie Blue. The purity of the protein is greater than 90%



The purity of Anti-TNFSF13B / BAFF / CD257 Reference Antibody (tabalumab) is more than 95%, determined by SEC-HPLC.