

**Anti-SLC40A1 Reference Antibody (LY2928057)  
Recombinant Antibody  
Catalog # APR10462****Specification**

---

**Anti-SLC40A1 Reference Antibody (LY2928057) - Product Information**

Application	FC, E, FTA
Primary Accession	<a href="#">O9NP59</a>
Reactivity	Rat, Cynomolgus, Human
Clonality	Monoclonal
Isotype	IgG4
Calculated MW	150 KDa

**Anti-SLC40A1 Reference Antibody (LY2928057) - Additional Information****Target/Specificity**  
SLC40A1**Endotoxin**  
< 0.001EU/ µg,determined by LAL method.**Conjugation**  
Unconjugated**Expression system**  
CHO Cell**Format**  
Purified monoclonal antibody supplied in PBS, pH6.0, without preservative.This antibody is purified through a protein A column.**Anti-SLC40A1 Reference Antibody (LY2928057) - Protein Information****Name** SLC40A1 ([HGNC:10909](#))**Function**  
Transports Fe(2+) from the inside of a cell to the outside of the cell, playing a key role for maintaining systemic iron homeostasis (PubMed:<a href="http://www.uniprot.org/citations/15692071" target="\_blank">15692071</a>, PubMed:<a href="http://www.uniprot.org/citations/22178646" target="\_blank">22178646</a>, PubMed:<a href="http://www.uniprot.org/citations/22682227" target="\_blank">22682227</a>, PubMed:<a href="http://www.uniprot.org/citations/24304836" target="\_blank">24304836</a>, PubMed:<a href="http://www.uniprot.org/citations/29237594" target="\_blank">29237594</a>, PubMed:<a href="http://www.uniprot.org/citations/29599243" target="\_blank">29599243</a>, PubMed:<a href="http://www.uniprot.org/citations/30247984" target="\_blank">30247984</a>). Transports iron from intestinal, splenic, hepatic cells, macrophages and erythrocytes into the blood to provide iron to other tissues (By similarity). Controls therefore dietary iron uptake, iron recycling by macrophages and erythrocytes, and release of iron stores in hepatocytes (By similarity). When iron

is in excess in serum, circulating HAMP/hepcidin levels increase resulting in a degradation of SLC40A1, thus limiting the iron efflux to plasma (PubMed:<a href="http://www.uniprot.org/citations/22682227" target="\_blank">22682227</a>, PubMed:<a href="http://www.uniprot.org/citations/29237594" target="\_blank">29237594</a>, PubMed:<a href="http://www.uniprot.org/citations/32814342" target="\_blank">32814342</a>).

#### Cellular Location

Cell membrane; Multi-pass membrane protein. Basolateral cell membrane; Multi-pass membrane protein. Note=Localized to the basolateral membrane of hepatocytoma WIF-B cells.

#### Tissue Location

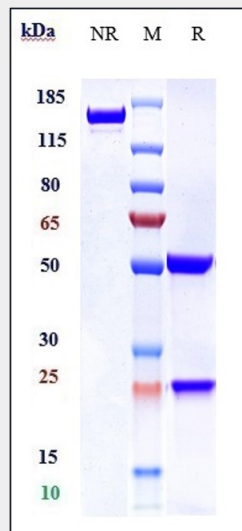
Detected in erythrocytes (at protein level) (PubMed:23219802). Expressed in placenta, intestine, muscle and spleen (PubMed:10747949). Highly expressed in mature red blood (PubMed:29599243).

### Anti-SLC40A1 Reference Antibody (LY2928057) - Protocols

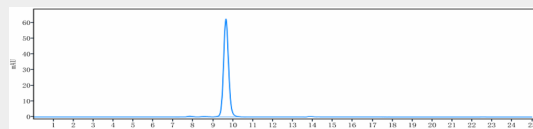
Provided below are standard protocols that you may find useful for product applications.

- [Western Blot](#)
- [Blocking Peptides](#)
- [Dot Blot](#)
- [Immunohistochemistry](#)
- [Immunofluorescence](#)
- [Immunoprecipitation](#)
- [Flow Cytometry](#)
- [Cell Culture](#)

### Anti-SLC40A1 Reference Antibody (LY2928057) - Images



Anti-SLC40A1 Reference Antibody (LY2928057) on SDS-PAGE under reducing (R) condition. The gel was stained with Coomassie Blue. The purity of the protein is greater than 95%



The purity of Anti-SLC40A1 Reference Antibody (LY2928057) is more than 99.9% ,determined by SEC-HPLC.