

**Anti-GDF8 / Myostatin Reference Antibody (landogrozumab)
Recombinant Antibody
Catalog # APR10458****Specification**

Anti-GDF8 / Myostatin Reference Antibody (landogrozumab) - Product Information

| | |
|-------------------|--|
| Application | FC, E, FTA |
| Primary Accession | O14793 |
| Reactivity | Rat, Bovine, Turkey, Human, Mouse, Chicken |
| Clonality | Monoclonal |
| Isotype | IgG4 |
| Calculated MW | 142.88 KDa |

Anti-GDF8 / Myostatin Reference Antibody (landogrozumab) - Additional Information**Target/Specificity**

GDF8 / Myostatin

Endotoxin

< 0.001EU/ µg,determined by LAL method.

Conjugation

Unconjugated

Expression system

CHO Cell

Format

Purified monoclonal antibody supplied in PBS, pH6.0, without preservative.This antibody is purified through a protein A column.

Storage

-80°C for 2 years under sterile conditions □ -20°C for 1 year under sterile conditions □ Avoid repeated freeze-thaw cycles.

Anti-GDF8 / Myostatin Reference Antibody (landogrozumab) - Protein Information**Name** MSTN**Synonyms** GDF8**Function**

Acts specifically as a negative regulator of skeletal muscle growth.

Cellular Location

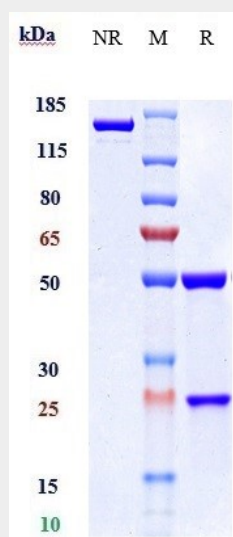
Secreted {ECO:0000250|UniProtKB:O08689}.

Anti-GDF8 / Myostatin Reference Antibody (landogrozumab) - Protocols

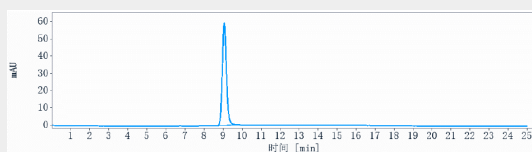
Provided below are standard protocols that you may find useful for product applications.

- [Western Blot](#)
- [Blocking Peptides](#)
- [Dot Blot](#)
- [Immunohistochemistry](#)
- [Immunofluorescence](#)
- [Immunoprecipitation](#)

Anti-GDF8 / Myostatin Reference Antibody (landogrozumab) - Images



Anti-GDF8 / Myostatin Reference Antibody (landogrozumab) on SDS-PAGE under reducing (R) condition. The gel was stained with Coomassie Blue. The purity of the protein is greater than 95%



The purity of Anti-GDF8 / Myostatin Reference Antibody (landogrozumab) is more than 100%, determined by SEC-HPLC.