

**Anti-SARS-CoV-2 Reference Antibody (Bebtelovimab)
Recombinant Antibody
Catalog # APR10454****Specification**

Anti-SARS-CoV-2 Reference Antibody (Bebtelovimab) - Product Information

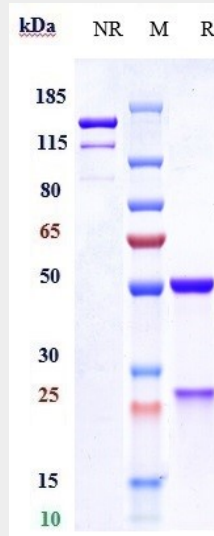
Application	FC, E, FTA
Primary Accession	NA
Reactivity	Virus
Clonality	Monoclonal
Isotype	IgG1
Calculated MW	143.82 KDa

Anti-SARS-CoV-2 Reference Antibody (Bebtelovimab) - Additional Information**Target/Specificity**
SARS-CoV-2**Endotoxin**
< 0.001EU/ µg, determined by LAL method.**Conjugation**
Unconjugated**Expression system**
CHO Cell**Format**
Purified monoclonal antibody supplied in PBS, pH6.0, without preservative. This antibody is purified through a protein A column.**Anti-SARS-CoV-2 Reference Antibody (Bebtelovimab) - Protein Information****Anti-SARS-CoV-2 Reference Antibody (Bebtelovimab) - Protocols**

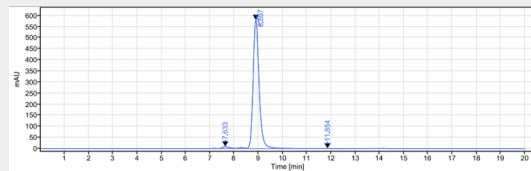
Provided below are standard protocols that you may find useful for product applications.

- [Western Blot](#)
- [Blocking Peptides](#)
- [Dot Blot](#)
- [Immunohistochemistry](#)
- [Immunofluorescence](#)
- [Immunoprecipitation](#)
- [Flow Cytometry](#)
- [Cell Culture](#)

Anti-SARS-CoV-2 Reference Antibody (Bebtelovimab) - Images



Anti-SARS-CoV-2 Reference Antibody (Bebtelovimab) on SDS-PAGE under reducing (R) condition. The gel was stained with Coomassie Blue. The purity of the protein is greater than 95%



The purity of Anti-SARS-CoV-2 Reference Antibody (Bebtelovimab) is more than 97% ,determined by SEC-HPLC.