

**Anti-IL-15 Reference Antibody (ordesekimab)
Recombinant Antibody
Catalog # APR10453****Specification**

Anti-IL-15 Reference Antibody (ordesekimab) - Product Information

Application	FC, E, FTA
Primary Accession	P40933
Reactivity	Cynomolgus, Human
Clonality	Monoclonal
Isotype	IgG1
Calculated MW	145.12 KDa

Anti-IL-15 Reference Antibody (ordesekimab) - Additional Information**Target/Specificity**

IL-15

Endotoxin

< 0.001EU/ µg, determined by LAL method.

Conjugation

Unconjugated

Expression system

CHO Cell

Format

Purified monoclonal antibody supplied in PBS, pH6.0, without preservative. This antibody is purified through a protein A column.

Anti-IL-15 Reference Antibody (ordesekimab) - Protein Information**Name** IL15**Function**

Cytokine that plays a major role in the development of inflammatory and protective immune responses to microbial invaders and parasites by modulating immune cells of both the innate and adaptive immune systems (PubMed: [15123770](http://www.uniprot.org/citations/15123770)). Stimulates the proliferation of natural killer cells, T-cells and B-cells and promotes the secretion of several cytokines (PubMed: [8178155](http://www.uniprot.org/citations/8178155), PubMed: [9326248](http://www.uniprot.org/citations/9326248)). In monocytes, induces the production of IL8 and monocyte chemoattractant protein 1/CCL2, two chemokines that attract neutrophils and monocytes respectively to sites of infection (PubMed: [9326248](http://www.uniprot.org/citations/9326248)). Unlike most cytokines, which are secreted in soluble form, IL15 is expressed in association with its high affinity IL15RA on the surface of IL15-producing cells and delivers signals to target cells that express

IL2RB and IL2RG receptor subunits (PubMed:10233906, PubMed:23104097, PubMed:8026467). Binding to its receptor triggers the phosphorylation of JAK1 and JAK3 and the recruitment and subsequent phosphorylation of signal transducer and activator of transcription-3/STAT3 and STAT5 (PubMed:7568001). In mast cells, induces the rapid tyrosine phosphorylation of STAT6 and thereby controls mast cell survival and release of cytokines such as IL4 (By similarity).

Cellular Location

[Isoform IL15-S48AA]: Secreted.

Tissue Location

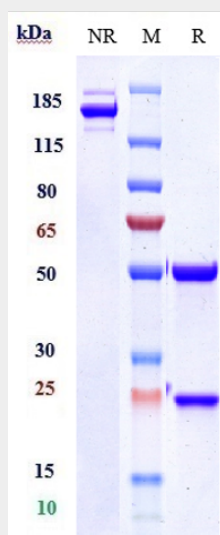
Most abundant in placenta and skeletal muscle. It is also detected in the heart, lung, liver and kidney. IL15-S21AA is preferentially expressed in tissues such as testis and thymus

Anti-IL-15 Reference Antibody (ordesekimab) - Protocols

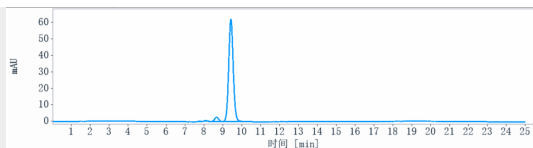
Provided below are standard protocols that you may find useful for product applications.

- [Western Blot](#)
- [Blocking Peptides](#)
- [Dot Blot](#)
- [Immunohistochemistry](#)
- [Immunofluorescence](#)
- [Immunoprecipitation](#)
- [Flow Cytometry](#)
- [Cell Culture](#)

Anti-IL-15 Reference Antibody (ordesekimab) - Images



Anti-IL-15 Reference Antibody (ordesekimab) on SDS-PAGE under reducing (R) condition. The gel was stained with Coomassie Blue. The purity of the protein is greater than 95%



The purity of Anti-IL-15 Reference Antibody (ordesekimab) is more than 95.77% ,determined by SEC-HPLC.