

Anti-B7-H1 / PD-L1 / CD274 Reference Antibody (MDX-1105)
Recombinant Antibody
Catalog # APR10443**Specification****Anti-B7-H1 / PD-L1 / CD274 Reference Antibody (MDX-1105) - Product Information**

Application	FC, E, FTA
Primary Accession	O9NZQ7
Reactivity	Cynomolgus, Human
Clonality	Monoclonal
Isotype	IgG4SP
Calculated MW	150 KDa

Anti-B7-H1 / PD-L1 / CD274 Reference Antibody (MDX-1105) - Additional Information**Target/Specificity**

B7-H1 / PD-L1 / CD274

Endotoxin

< 0.001EU/ µg, determined by LAL method.

Conjugation

Unconjugated

Expression system

CHO Cell

Format

Purified monoclonal antibody supplied in PBS, pH6.0, without preservative. This antibody is purified through a protein A column.

Anti-B7-H1 / PD-L1 / CD274 Reference Antibody (MDX-1105) - Protein Information**Name** CD274 ([HGNC:17635](#))**Function**

Plays a critical role in induction and maintenance of immune tolerance to self (PubMed: [11015443](http://www.uniprot.org/citations/11015443), PubMed: [28813410](http://www.uniprot.org/citations/28813410), PubMed: [28813417](http://www.uniprot.org/citations/28813417), PubMed: [31399419](http://www.uniprot.org/citations/31399419)). As a ligand for the inhibitory receptor PDCD1/PD-1, modulates the activation threshold of T-cells and limits T-cell effector response (PubMed: [11015443](http://www.uniprot.org/citations/11015443), PubMed: [28813410](http://www.uniprot.org/citations/28813410), PubMed: [28813417](http://www.uniprot.org/citations/28813417), PubMed: [36727298](http://www.uniprot.org/citations/36727298)). Through a yet unknown activating receptor, may costimulate T-cell subsets that predominantly produce interleukin-10 (IL10) (PubMed:

<http://www.uniprot.org/citations/10581077> target="_blank">10581077). Can also act as a transcription coactivator: in response to hypoxia, translocates into the nucleus via its interaction with phosphorylated STAT3 and promotes transcription of GSDMC, leading to pyroptosis (PubMed:32929201).

Cellular Location

Cell membrane; Single-pass type I membrane protein. Early endosome membrane; Single-pass type I membrane protein. Recycling endosome membrane; Single-pass type I membrane protein. Nucleus. Note=Associates with CMTM6 at recycling endosomes, where it is protected from being targeted for lysosomal degradation (PubMed:28813417). Translocates to the nucleus in response to hypoxia via its interaction with phosphorylated STAT3 (PubMed:32929201). [Isoform 2]: Endomembrane system; Single-pass type I membrane protein

Tissue Location

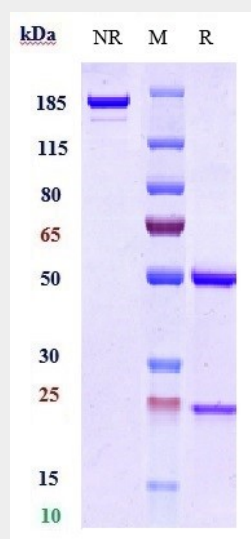
Highly expressed in the heart, skeletal muscle, placenta and lung. Weakly expressed in the thymus, spleen, kidney and liver. Expressed on activated T- and B-cells, dendritic cells, keratinocytes and monocytes.

Anti-B7-H1 / PD-L1 / CD274 Reference Antibody (MDX-1105) - Protocols

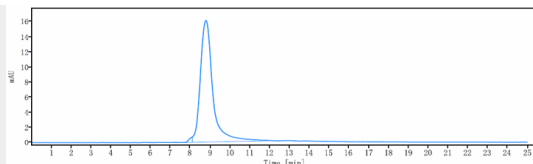
Provided below are standard protocols that you may find useful for product applications.

- [Western Blot](#)
- [Blocking Peptides](#)
- [Dot Blot](#)
- [Immunohistochemistry](#)
- [Immunofluorescence](#)
- [Immunoprecipitation](#)
- [Flow Cytometry](#)
- [Cell Culture](#)

Anti-B7-H1 / PD-L1 / CD274 Reference Antibody (MDX-1105) - Images



Anti-B7-H1 / PD-L1 / CD274 Reference Antibody (MDX-1105) on SDS-PAGE under reducing (R) condition. The gel was stained with Coomassie Blue. The purity of the protein is greater than 95%



The purity of Anti-B7-H1 / PD-L1 / CD274 Reference Antibody (MDX-1105) is more than 95% ,determined by SEC-HPLC.