

Anti-DCBLD2 / ESDN Reference Antibody (FA19-1)
Recombinant Antibody
Catalog # APR10442

Specification

Anti-DCBLD2 / ESDN Reference Antibody (FA19-1) - Product Information

Application	FC, E, FTA
Primary Accession	O96PD2
Reactivity	Human, Mouse
Clonality	Monoclonal
Isotype	IgG1
Calculated MW	150 KDa

Anti-DCBLD2 / ESDN Reference Antibody (FA19-1) - Additional Information

Target/Specificity
DCBLD2 / ESDN

Endotoxin
< 0.001EU/ µg,determined by LAL method.

Conjugation
Unconjugated

Expression system
CHO Cell

Format
Purified monoclonal antibody supplied in PBS, pH6.0, without preservative.This antibody is purified through a protein A column.

Anti-DCBLD2 / ESDN Reference Antibody (FA19-1) - Protein Information

Name DCBLD2

Synonyms CLCP1, ESDN

Cellular Location
Membrane; Single- pass type I membrane protein

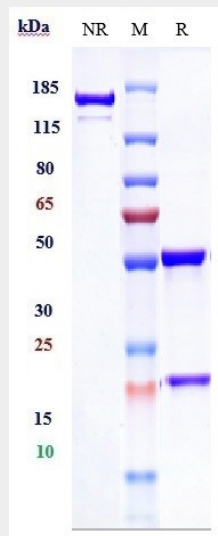
Tissue Location
Highly expressed in testis, heart, skeletal muscle and also in cultured vascular smooth muscle cells

Anti-DCBLD2 / ESDN Reference Antibody (FA19-1) - Protocols

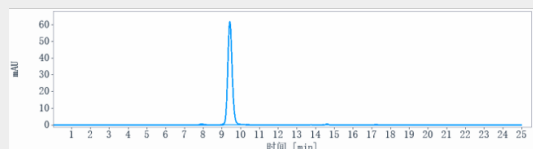
Provided below are standard protocols that you may find useful for product applications.

- [Western Blot](#)
- [Blocking Peptides](#)
- [Dot Blot](#)
- [Immunohistochemistry](#)
- [Immunofluorescence](#)
- [Immunoprecipitation](#)
- [Flow Cytometry](#)
- [Cell Culture](#)

Anti-DCBLD2 / ESDN Reference Antibody (FA19-1) - Images



Anti-DCBLD2 / ESDN Reference Antibody (FA19-1) on SDS-PAGE under reducing (R) condition. The gel was stained with Coomassie Blue. The purity of the protein is greater than 90%



The purity of Anti-DCBLD2 / ESDN Reference Antibody (FA19-1) is more than 95% ,determined by SEC-HPLC.