

**Anti-IL-13Ra1 / CD213a1 Reference Antibody (MK-6105)
Recombinant Antibody
Catalog # APR10437****Specification**

Anti-IL-13Ra1 / CD213a1 Reference Antibody (MK-6105) - Product Information

Application	FC, E, FTA
Primary Accession	P78552
Reactivity	Cynomolgus, Human
Clonality	Monoclonal
Isotype	IgG2SA
Calculated MW	124.7 KDa

Anti-IL-13Ra1 / CD213a1 Reference Antibody (MK-6105) - Additional Information**Target/Specificity**
IL-13Ra1 / CD213a1**Endotoxin**
< 0.001EU/ µg,determined by LAL method.**Conjugation**
Unconjugated**Expression system**
CHO Cell**Format**
Purified monoclonal antibody supplied in PBS, pH6.0, without preservative.This antibody is purified through a protein A column.**Storage**
-80°C for 2 years under sterile conditions □ -20°C for 1 year under sterile conditions □ Avoid repeated freeze-thaw cycles.**Anti-IL-13Ra1 / CD213a1 Reference Antibody (MK-6105) - Protein Information****Name** IL13RA1**Synonyms** IL13R, IL13RA**Function**
Binds with low affinity to interleukin-13 (IL13). Together with IL4RA can form a functional receptor for IL13. Also serves as an alternate accessory protein to the common cytokine receptor gamma chain for interleukin-4 (IL4) signaling, but cannot replace the function of IL2RG in allowing enhanced interleukin-2 (IL2) binding activity.**Cellular Location**

Membrane; Single-pass type I membrane protein.

Tissue Location

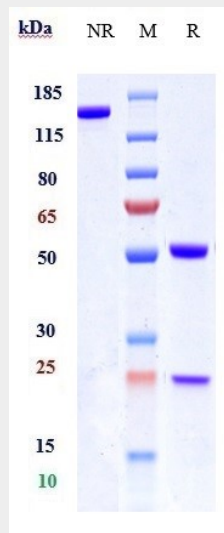
Ubiquitous. Highest levels in heart, liver, skeletal muscle and ovary; lowest levels in brain, lung and kidney Also found in B-cells, T-cells and endothelial cells

Anti-IL-13Ra1 / CD213a1 Reference Antibody (MK-6105) - Protocols

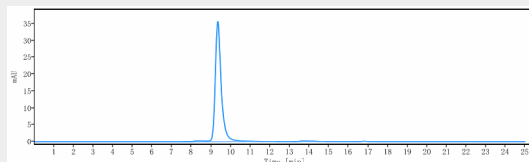
Provided below are standard protocols that you may find useful for product applications.

- [Western Blot](#)
- [Blocking Peptides](#)
- [Dot Blot](#)
- [Immunohistochemistry](#)
- [Immunofluorescence](#)
- [Immunoprecipitation](#)
- [Flow Cytometry](#)
- [Cell Culture](#)

Anti-IL-13Ra1 / CD213a1 Reference Antibody (MK-6105) - Images



Anti-IL-13Ra1 / CD213a1 Reference Antibody (MK-6105) on SDS-PAGE under reducing (R) condition. The gel was stained with Coomassie Blue. The purity of the protein is greater than 95%



The purity of Anti-IL-13Ra1 / CD213a1 Reference Antibody (MK-6105) is more than 100% ,determined by SEC-HPLC.