

**Anti-GUCY2C Reference Antibody (indusatumab vedotin)
Recombinant Antibody
Catalog # APR10435****Specification**

Anti-GUCY2C Reference Antibody (indusatumab vedotin) - Product Information

Application	FC, E, FTA
Primary Accession	P25092
Reactivity	Human
Clonality	Monoclonal
Isotype	IgG1
Calculated MW	145 KDa

Anti-GUCY2C Reference Antibody (indusatumab vedotin) - Additional Information**Target/Specificity**
GUCY2C**Endotoxin**

< 0.001EU/ µg, determined by LAL method.

Conjugation

MMAE

Expression system

CHO Cell

Format

Purified monoclonal antibody supplied in PBS, pH6.0, without preservative. This antibody is purified through a protein A column.

Anti-GUCY2C Reference Antibody (indusatumab vedotin) - Protein Information

Name GUCY2C {ECO:0000303|PubMed:22521417, ECO:0000312|HGNC:HGNC:4688}

Function

Guanylyl cyclase that catalyzes synthesis of cyclic GMP (cGMP) from GTP (PubMed: [11950846](http://www.uniprot.org/citations/11950846), PubMed: [1718270](http://www.uniprot.org/citations/1718270), PubMed: [22436048](http://www.uniprot.org/citations/22436048), PubMed: [22521417](http://www.uniprot.org/citations/22521417), PubMed: [23269669](http://www.uniprot.org/citations/23269669)). Receptor for the E.coli heat-stable enterotoxin; E.coli enterotoxin markedly stimulates the accumulation of cGMP in mammalian cells expressing GUCY2C (PubMed: [1680854](http://www.uniprot.org/citations/1680854), PubMed: [1718270](http://www.uniprot.org/citations/1718270)). Also activated by the endogenous peptides guanylin and uroguanylin (PubMed: [8381596](http://www.uniprot.org/citations/8381596)).

Cellular Location

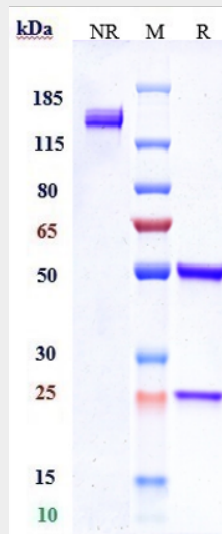
Cell membrane; Single-pass type I membrane protein Endoplasmic reticulum membrane; Single-pass type I membrane protein. Note=The 145 kDa plasma membrane form of GUCY2C contains sialic acid and galactose residues, while a differentially glycosylated 130 Kda form is a high mannose form that is resident in the endoplasmic reticulum and may serve as the precursor for the cell surface form

Anti-GUCY2C Reference Antibody (indusatumab vedotin) - Protocols

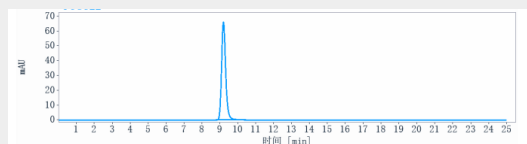
Provided below are standard protocols that you may find useful for product applications.

- [Western Blot](#)
- [Blocking Peptides](#)
- [Dot Blot](#)
- [Immunohistochemistry](#)
- [Immunofluorescence](#)
- [Immunoprecipitation](#)
- [Flow Cytometry](#)
- [Cell Culture](#)

Anti-GUCY2C Reference Antibody (indusatumab vedotin) - Images



Anti-GUCY2C Reference Antibody (indusatumab vedotin) on SDS-PAGE under reducing (R) condition. The gel was stained with Coomassie Blue. The purity of the protein is greater than 90%



The purity of Anti-GUCY2C Reference Antibody (indusatumab vedotin) is more than 95% ,determined by SEC-HPLC.