

**Anti-SOST / Sclerostin Reference Antibody (setrusumab)  
Recombinant Antibody  
Catalog # APR10431**

**Specification**

---

**Anti-SOST / Sclerostin Reference Antibody (setrusumab) - Product Information**

Application	FC, E, FTA
Primary Accession	<a href="#">O9BOB4</a>
Reactivity	Cynomolgus, Human, Mouse
Clonality	Monoclonal
Isotype	IgG2SA
Calculated MW	143.44 KDa

**Anti-SOST / Sclerostin Reference Antibody (setrusumab) - Additional Information**

**Target/Specificity**  
SOST / Sclerostin

**Endotoxin**  
< 0.001EU/ µg,determined by LAL method.

**Conjugation**  
Unconjugated

**Expression system**  
CHO Cell

**Format**  
Purified monoclonal antibody supplied in PBS, pH6.0, without preservative.This antibody is purified through a protein A column.

**Storage**  
-80°C for 2 years under sterile conditions □ -20°C for 1 year under sterile conditions □ Avoid repeated freeze-thaw cycles.

**Anti-SOST / Sclerostin Reference Antibody (setrusumab) - Protein Information**

**Name** SOST ([HGNC:13771](#))

**Function**  
Negative regulator of bone growth that acts through inhibition of Wnt signaling and bone formation.

**Cellular Location**  
Secreted, extracellular space, extracellular matrix

**Tissue Location**  
Widely expressed at low levels with highest levels in bone, cartilage, kidney, liver, bone marrow

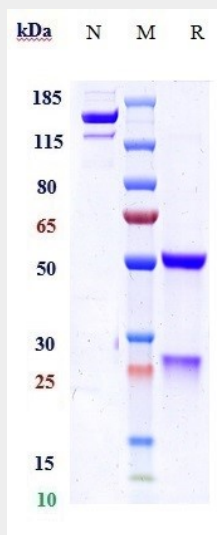
and primary osteoblasts differentiated for 21 days. Detected in the subendothelial layer of the aortic intima (at protein level).

### Anti-SOST / Sclerostin Reference Antibody (setrusumab) - Protocols

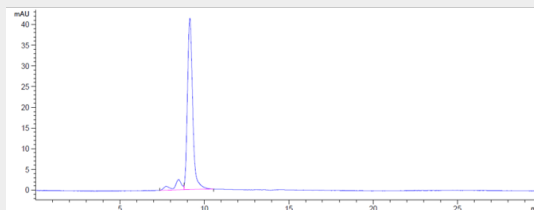
Provided below are standard protocols that you may find useful for product applications.

- [Western Blot](#)
- [Blocking Peptides](#)
- [Dot Blot](#)
- [Immunohistochemistry](#)
- [Immunofluorescence](#)
- [Immunoprecipitation](#)
- [Flow Cytometry](#)
- [Cell Culture](#)

### Anti-SOST / Sclerostin Reference Antibody (setrusumab) - Images



Anti-SOST / Sclerostin Reference Antibody (setrusumab) on SDS-PAGE under reducing (R) condition. The gel was stained with Coomassie Blue. The purity of the protein is greater than 95%



The purity of Anti-SOST / Sclerostin Reference Antibody (setrusumab) is more than 91.76%, determined by SEC-HPLC.