

**Anti-IL-17c Reference Antibody (MOR106)**  
**Recombinant Antibody**  
**Catalog # APR10430**

**Specification**

---

**Anti-IL-17c Reference Antibody (MOR106) - Product Information**

Application	FC, E, FTA
Primary Accession	<a href="#">O9P0M4</a>
Reactivity	Cynomolgus, Human, Mouse
Clonality	Monoclonal
Isotype	IgG1
Calculated MW	150 KDa

**Anti-IL-17c Reference Antibody (MOR106) - Additional Information**

**Target/Specificity**  
IL-17c

**Endotoxin**  
< 0.001EU/ µg,determined by LAL method.

**Conjugation**  
Unconjugated

**Expression system**  
CHO Cell

**Format**  
Purified monoclonal antibody supplied in PBS, pH6.0, without preservative.This antibody is purified through a protein A column.

**Anti-IL-17c Reference Antibody (MOR106) - Protein Information**

**Name** IL17C

**Function**  
Cytokine that plays a crucial role in innate immunity of the epithelium, including to intestinal bacterial pathogens, in an autocrine manner. Stimulates the production of antibacterial peptides and pro-inflammatory molecules for host defense by signaling through the NF-kappa-B and MAPK pathways. Acts synergically with IL22 in inducing the expression of antibacterial peptides, including S100A8, S100A9, REG3A and REG3G. Synergy is also observed with TNF and IL1B in inducing DEFB2 from keratinocytes. Depending on the type of insult, may have both protective and pathogenic properties, either by maintaining epithelial homeostasis after an inflammatory challenge or by promoting inflammatory phenotype. Enhanced IL17C/IL17RE signaling may also lead to greater susceptibility to autoimmune diseases.

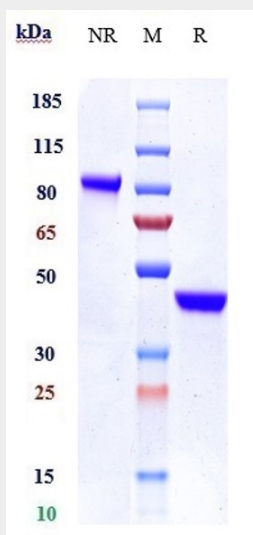
**Cellular Location**  
Secreted.

## Anti-IL-17c Reference Antibody (MOR106) - Protocols

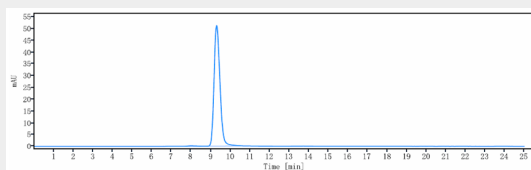
Provided below are standard protocols that you may find useful for product applications.

- [Western Blot](#)
- [Blocking Peptides](#)
- [Dot Blot](#)
- [Immunohistochemistry](#)
- [Immunofluorescence](#)
- [Immunoprecipitation](#)
- [Flow Cytometry](#)
- [Cell Culture](#)

## Anti-IL-17c Reference Antibody (MOR106) - Images



Anti-IL-17c Reference Antibody (MOR106) on SDS-PAGE under reducing (R) condition. The gel was stained with Coomassie Blue. The purity of the protein is greater than 90%



The purity of Anti-IL-17c Reference Antibody (MOR106) is more than 95%, determined by SEC-HPLC.