

**Anti-TPBG Reference Antibody (naptumomAb)
Recombinant Antibody
Catalog # APR10423**

Specification

Anti-TPBG Reference Antibody (naptumomAb) - Product Information

Application	FC, E, FTA
Primary Accession	O13641
Reactivity	Human
Clonality	Monoclonal
Isotype	IgG1
Calculated MW	145 KDa

Anti-TPBG Reference Antibody (naptumomAb) - Additional Information

Target/Specificity
TPBG

Endotoxin
< 0.001EU/ µg,determined by LAL method.

Conjugation
Unconjugated

Expression system
CHO Cell

Format
Purified monoclonal antibody supplied in PBS, pH6.0, without preservative.This antibody is purified through a protein A column.

Storage
-80°C for 2 years under sterile conditions □ -20°C for 1 year under sterile conditions □ Avoid repeated freeze-thaw cycles.

Anti-TPBG Reference Antibody (naptumomAb) - Protein Information

Name TPBG

Synonyms 5T4

Function
May function as an inhibitor of Wnt/beta-catenin signaling by indirectly interacting with LRP6 and blocking Wnt3a-dependent LRP6 internalization.

Cellular Location
Cell membrane; Single-pass type I membrane protein

Tissue Location

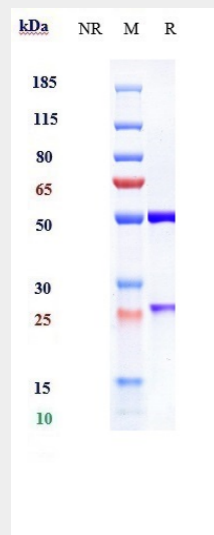
Expressed by all types of trophoblasts as early as 9 weeks of development. Specific for trophoblastic cells except for amniotic epithelium. In adult tissues, the expression is limited to a few epithelial cell types but is found on a variety of carcinoma

Anti-TPBG Reference Antibody (naptumomAb) - Protocols

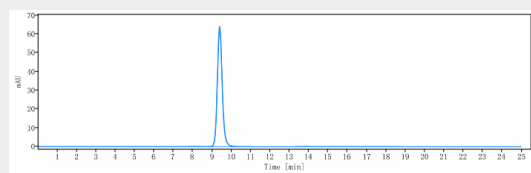
Provided below are standard protocols that you may find useful for product applications.

- [Western Blot](#)
- [Blocking Peptides](#)
- [Dot Blot](#)
- [Immunohistochemistry](#)
- [Immunofluorescence](#)
- [Immunoprecipitation](#)
- [Flow Cytometry](#)
- [Cell Culture](#)

Anti-TPBG Reference Antibody (naptumomAb) - Images



Anti-TPBG Reference Antibody (naptumomAb) on SDS-PAGE under reducing (R) condition. The gel was stained with Coomassie Blue. The purity of the protein is greater than 90%



The purity of Anti-TPBG Reference Antibody (naptumomAb) is more than 95%, determined by SEC-HPLC.