

Anti-RSV Reference Antibody (Nirsevimab)
Recombinant Antibody
Catalog # APR10417

Specification

Anti-RSV Reference Antibody (Nirsevimab) - Product Information

Application	FC, E, FTA
Primary Accession	NA
Reactivity	Rat
Clonality	Monoclonal
Isotype	IgG1
Calculated MW	145 KDa

Anti-RSV Reference Antibody (Nirsevimab) - Additional Information

Target/Specificity
RSV

Endotoxin
< 0.001EU/ µg,determined by LAL method.

Conjugation
Unconjugated

Expression system
CHO Cell

Format
Purified monoclonal antibody supplied in PBS, pH6.0, without preservative.This antibody is purified through a protein A column.

Storage
-80°C for 2 years under sterile conditions -20°C for 1 year under sterile conditions Avoid repeated freeze-thaw cycles.

Anti-RSV Reference Antibody (Nirsevimab) - Protein Information

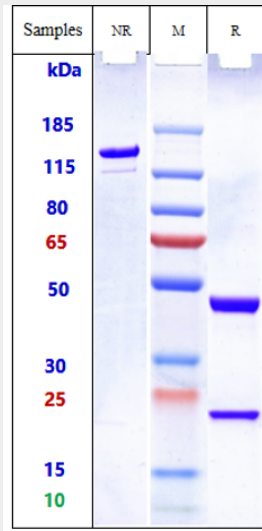
Anti-RSV Reference Antibody (Nirsevimab) - Protocols

Provided below are standard protocols that you may find useful for product applications.

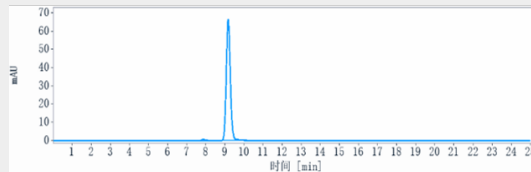
- [Western Blot](#)
- [Blocking Peptides](#)
- [Dot Blot](#)
- [Immunohistochemistry](#)
- [Immunofluorescence](#)

- [Immunoprecipitation](#)
- [Flow Cytometry](#)
- [Cell Culture](#)

Anti-RSV Reference Antibody (Nirsevimab) - Images



Anti-RSV Reference Antibody (Nirsevimab) on SDS-PAGE under reducing (R) condition. The gel was stained with Coomassie Blue. The purity of the protein is greater than 90%



The purity of Anti-RSV Reference Antibody (Nirsevimab) is more than 95% ,determined by SEC-HPLC.