

**Anti-MADCAM1 Reference Antibody (ontamalimab)  
Recombinant Antibody  
Catalog # APR10396****Specification**

---

**Anti-MADCAM1 Reference Antibody (ontamalimab) - Product Information**

Application	FC, E, FTA
Primary Accession	<a href="#">Q13477</a>
Reactivity	Cynomolgus, Human
Clonality	Monoclonal
Isotype	IgG2SA
Calculated MW	146.86 KDa

**Anti-MADCAM1 Reference Antibody (ontamalimab) - Additional Information****Target/Specificity**  
MADCAM1**Endotoxin**  
< 0.001EU/ µg,determined by LAL method.**Conjugation**  
Unconjugated**Expression system**  
CHO Cell**Format**  
Purified monoclonal antibody supplied in PBS, pH6.0, without preservative.This antibody is purified through a protein A column.**Anti-MADCAM1 Reference Antibody (ontamalimab) - Protein Information****Name** MADCAM1**Function**  
Cell adhesion leukocyte receptor expressed by mucosal venules, helps to direct lymphocyte traffic into mucosal tissues including the Peyer patches and the intestinal lamina propria. It can bind both integrin alpha-4/beta-7 and L-selectin, regulating both the passage and retention of leukocytes. Isoform 2, lacking the mucin-like domain, may be specialized in supporting integrin alpha-4/beta-7-dependent adhesion strengthening, independent of L-selectin binding.**Cellular Location**  
Membrane; Single-pass type I membrane protein.**Tissue Location**  
Highly expressed on high endothelial venules (HEV) and lamina propria venules found in the small intestine, and to a lesser extent in the colon and spleen. Very low levels of expression found in

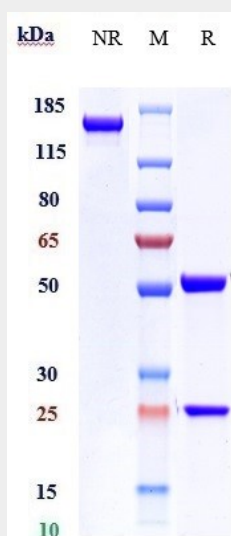
pancreas and brain. Not expressed in the thymus, prostate, ovaries, testis, heart, placenta, lung, liver, skeletal muscle, kidney or peripheral blood leukocytes.

### Anti-MADCAM1 Reference Antibody (ontamalimab) - Protocols

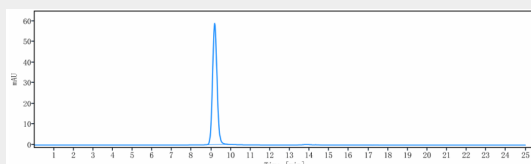
Provided below are standard protocols that you may find useful for product applications.

- [Western Blot](#)
- [Blocking Peptides](#)
- [Dot Blot](#)
- [Immunohistochemistry](#)
- [Immunofluorescence](#)
- [Immunoprecipitation](#)
- [Flow Cytometry](#)
- [Cell Culture](#)

### Anti-MADCAM1 Reference Antibody (ontamalimab) - Images



Anti-MADCAM1 Reference Antibody (ontamalimab) on SDS-PAGE under reducing (R) condition. The gel was stained with Coomassie Blue. The purity of the protein is greater than 95%



The purity of Anti-MADCAM1 Reference Antibody (ontamalimab) is more than 100% ,determined by SEC-HPLC.