

**Anti-CCR4 / CD194 Reference Antibody (mogamulizumab)
Recombinant Antibody
Catalog # APR10385****Specification**

Anti-CCR4 / CD194 Reference Antibody (mogamulizumab) - Product Information

Application	FC, E, FTA
Primary Accession	P51679
Reactivity	Human
Clonality	Monoclonal
Isotype	IgG1
Calculated MW	145 KDa

Anti-CCR4 / CD194 Reference Antibody (mogamulizumab) - Additional Information**Target/Specificity**
CCR4 / CD194**Endotoxin**
< 0.001EU/ µg,determined by LAL method.**Conjugation**
Unconjugated**Expression system**
CHO Cell**Format**
Purified monoclonal antibody supplied in PBS, pH6.0, without preservative.This antibody is purified through a protein A column.**Storage**
-80°C for 2 years under sterile conditions □ -20°C for 1 year under sterile conditions □ Avoid repeated freeze-thaw cycles.**Anti-CCR4 / CD194 Reference Antibody (mogamulizumab) - Protein Information****Name** CCR4**Synonyms** CMKBR4**Function**
High affinity receptor for the C-C type chemokines CCL17/TARC, CCL22/MDC and CKLF isoform 1/CKLF1. The activity of this receptor is mediated by G(i) proteins which activate a phosphatidylinositol-calcium second messenger system. Can function as a chemoattractant homing receptor on circulating memory lymphocytes and as a coreceptor for some primary HIV-2 isolates. In the CNS, could mediate hippocampal-neuron survival.

Cellular Location

Cell membrane; Multi-pass membrane protein.

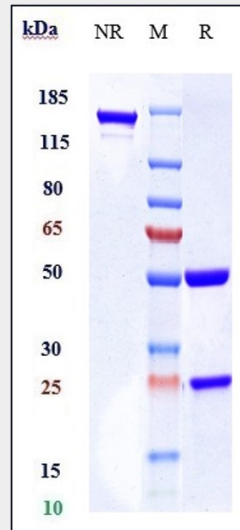
Tissue Location

Predominantly expressed in the thymus, in peripheral blood leukocytes, including T-cells, mostly CD4+ cells, and basophils, and in platelets; at lower levels, in the spleen and in monocytes (PubMed:10754297, PubMed:9169480). Detected also in macrophages, IL-2-activated natural killer cells and skin-homing memory T-cells, mostly the ones expressing the cutaneous lymphocyte antigen (CLA). Expressed in brain microvascular and coronary artery endothelial cells (PubMed:10754297).

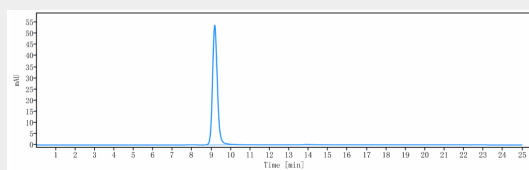
Anti-CCR4 / CD194 Reference Antibody (mogamulizumab) - Protocols

Provided below are standard protocols that you may find useful for product applications.

- [Western Blot](#)
- [Blocking Peptides](#)
- [Dot Blot](#)
- [Immunohistochemistry](#)
- [Immunofluorescence](#)
- [Immunoprecipitation](#)
- [Flow Cytometry](#)
- [Cell Culture](#)

Anti-CCR4 / CD194 Reference Antibody (mogamulizumab) - Images

Anti-CCR4 / CD194 Reference Antibody (mogamulizumab) on SDS-PAGE under reducing (R) condition. The gel was stained with Coomassie Blue. The purity of the protein is greater than 90%



The purity of Anti-CCR4 / CD194 Reference Antibody (mogamulizumab) is more than 95%, determined by SEC-HPLC.