

**Anti-LRRC15 / LIB Reference Antibody (samrotamab)
Recombinant Antibody
Catalog # APR10382****Specification**

Anti-LRRC15 / LIB Reference Antibody (samrotamab) - Product Information

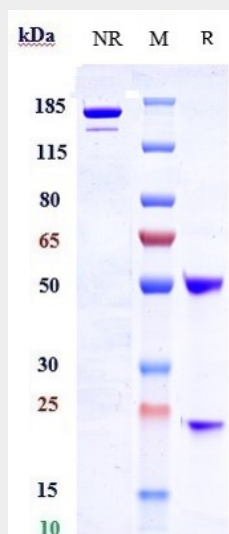
Application	FC, E, FTA
Primary Accession	Q8TF66-1
Reactivity	Human, Mouse
Clonality	Monoclonal
Isotype	IgG1
Calculated MW	145 KDa

Anti-LRRC15 / LIB Reference Antibody (samrotamab) - Additional Information**Target/Specificity**
LRRC15 / LIB**Endotoxin**
< 0.001EU/ µg,determined by LAL method.**Conjugation**
Unconjugated**Expression system**
CHO Cell**Format**
Purified monoclonal antibody supplied in PBS, pH6.0, without preservative.This antibody is purified through a protein A column.**Anti-LRRC15 / LIB Reference Antibody (samrotamab) - Protein Information****Anti-LRRC15 / LIB Reference Antibody (samrotamab) - Protocols**

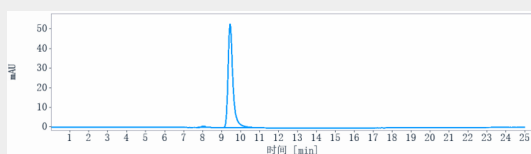
Provided below are standard protocols that you may find useful for product applications.

- [Western Blot](#)
- [Blocking Peptides](#)
- [Dot Blot](#)
- [Immunohistochemistry](#)
- [Immunofluorescence](#)
- [Immunoprecipitation](#)
- [Flow Cytometry](#)
- [Cell Culture](#)

Anti-LRRC15 / LIB Reference Antibody (samrotamab) - Images



Anti-LRRC15 / LIB Reference Antibody (samrotamab) on SDS-PAGE under reducing (R) condition. The gel was stained with Coomassie Blue. The purity of the protein is greater than 90%



The purity of Anti-LRRC15 / LIB Reference Antibody (samrotamab) is more than 95% ,determined by SEC-HPLC.