

**Anti-FcεR2 / CD23 Reference Antibody (lumiliximab)
Recombinant Antibody
Catalog # APR10378****Specification**

Anti-FcεR2 / CD23 Reference Antibody (lumiliximab) - Product Information

Application	FC, E, FTA
Primary Accession	P06734
Reactivity	Human
Clonality	Monoclonal
Isotype	IgG1
Calculated MW	144.82 KDa

Anti-FcεR2 / CD23 Reference Antibody (lumiliximab) - Additional Information**Target/Specificity**
FcεR2 / CD23**Endotoxin**
< 0.001EU/ μg, determined by LAL method.**Conjugation**
Unconjugated**Expression system**
CHO Cell**Format**
Purified monoclonal antibody supplied in PBS, pH6.0, without preservative. This antibody is purified through a protein A column.**Anti-FcεR2 / CD23 Reference Antibody (lumiliximab) - Protein Information****Name** FCER2**Synonyms** CD23A, CLEC4J, FCE2, IGEBF**Function**
Low-affinity receptor for immunoglobulin E (IgE) and CR2/CD21. Has essential roles in the regulation of IgE production and in the differentiation of B cells. On B cells, initiates IgE-dependent antigen uptake and presentation to T cells (PubMed: [2167225](http://www.uniprot.org/citations/2167225)). On macrophages, upon IgE binding and antigen cross-linking induces intracellular killing of parasites through activation of L-Arginine- nitric oxide pathway (PubMed: [7544003](http://www.uniprot.org/citations/7544003)).**Cellular Location**
Cell membrane; Single-pass type II membrane protein. Cell membrane; Lipid-anchor. Secreted.

Note=Also exists as a soluble excreted form, sCD23

Tissue Location

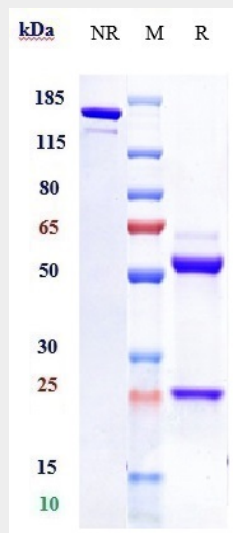
Detected in urine (at protein level).

Anti-FcεR2 / CD23 Reference Antibody (lumiliximab) - Protocols

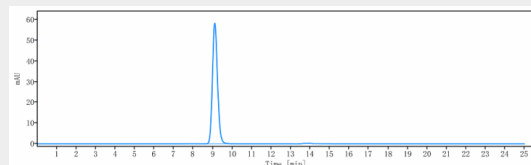
Provided below are standard protocols that you may find useful for product applications.

- [Western Blot](#)
- [Blocking Peptides](#)
- [Dot Blot](#)
- [Immunohistochemistry](#)
- [Immunofluorescence](#)
- [Immunoprecipitation](#)
- [Flow Cytometry](#)
- [Cell Culture](#)

Anti-FcεR2 / CD23 Reference Antibody (lumiliximab) - Images



Anti-FcεR2 / CD23 Reference Antibody (lumiliximab) on SDS-PAGE under reducing (R) condition. The gel was stained with Coomassie Blue. The purity of the protein is greater than 95%



The purity of Anti-FcεR2 / CD23 Reference Antibody (lumiliximab) is more than 100% ,determined by SEC-HPLC.