

**Anti-CD20 Reference Antibody (ocrelizumab)  
Recombinant Antibody  
Catalog # APR10376**

**Specification**

---

**Anti-CD20 Reference Antibody (ocrelizumab) - Product Information**

Application	FC, E, FTA
Primary Accession	<a href="#">P11836</a>
Reactivity	Cynomolgus, Human
Clonality	Monoclonal
Isotype	IgG1
Calculated MW	145.82 KDa

**Anti-CD20 Reference Antibody (ocrelizumab) - Additional Information**

**Target/Specificity**  
CD20

**Endotoxin**  
< 0.001EU/ µg,determined by LAL method.

**Conjugation**  
Unconjugated

**Expression system**  
CHO Cell

**Format**  
Purified monoclonal antibody supplied in PBS, pH6.0, without preservative.This antibody is purified through a protein A column.

**Anti-CD20 Reference Antibody (ocrelizumab) - Protein Information**

**Name** MS4A1

**Synonyms** CD20

**Function**  
B-lymphocyte-specific membrane protein that plays a role in the regulation of cellular calcium influx necessary for the development, differentiation, and activation of B-lymphocytes (PubMed:<a href="http://www.uniprot.org/citations/12920111" target="\_blank">12920111</a>, PubMed:<a href="http://www.uniprot.org/citations/3925015" target="\_blank">3925015</a>, PubMed:<a href="http://www.uniprot.org/citations/7684739" target="\_blank">7684739</a>). Functions as a store-operated calcium (SOC) channel component promoting calcium influx after activation by the B-cell receptor/BCR (PubMed:<a href="http://www.uniprot.org/citations/12920111" target="\_blank">12920111</a>, PubMed:<a href="http://www.uniprot.org/citations/18474602" target="\_blank">18474602</a>, PubMed:<a href="http://www.uniprot.org/citations/7684739" target="\_blank">7684739</a>).

**Cellular Location**

Cell membrane; Multi-pass membrane protein. Cell membrane; Lipid-anchor. Note=Constitutively associated with membrane rafts.

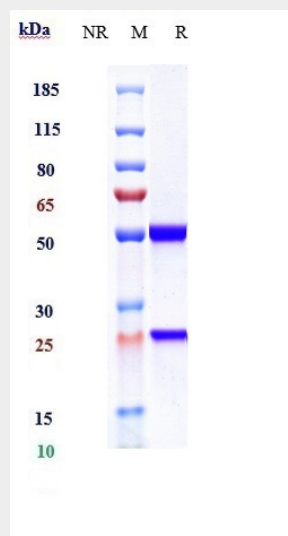
**Tissue Location**

Expressed on B-cells.

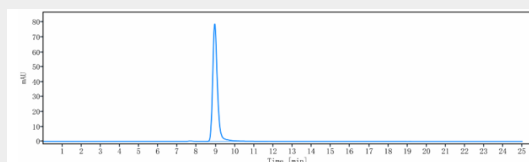
**Anti-CD20 Reference Antibody (ocrelizumab) - Protocols**

Provided below are standard protocols that you may find useful for product applications.

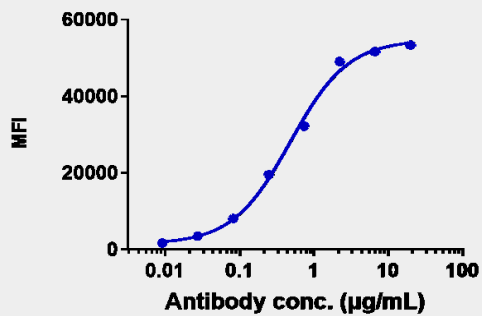
- [Western Blot](#)
- [Blocking Peptides](#)
- [Dot Blot](#)
- [Immunohistochemistry](#)
- [Immunofluorescence](#)
- [Immunoprecipitation](#)

**Anti-CD20 Reference Antibody (ocrelizumab) - Images**

Anti-CD20 Reference Antibody (ocrelizumab) on SDS-PAGE under reducing (R) condition. The gel was stained with Coomassie Blue. The purity of the protein is greater than 95%



The purity of Anti-CD20 Reference Antibody (ocrelizumab) is more than 95% ,determined by SEC-HPLC.



Human CD20 CHO-K1 cells were stained with Anti-CD20 Reference Antibody (ocrelizumab) and negative control protein respectively, washed and then followed by PE and analyzed with FACS, EC440=0.48 µg/mL