

**Anti-MUC18 / MCAM / CD146 Reference Antibody (imaprelimab)
Recombinant Antibody
Catalog # APR10374**

Specification

Anti-MUC18 / MCAM / CD146 Reference Antibody (imaprelimab) - Product Information

Application	FC, E, FTA
Primary Accession	P43121
Reactivity	Cynomolgus, Human, Mouse
Clonality	Monoclonal
Isotype	IgG1
Calculated MW	145 KDa

Anti-MUC18 / MCAM / CD146 Reference Antibody (imaprelimab) - Additional Information

Target/Specificity
MUC18 / MCAM / CD146

Endotoxin
< 0.001EU/ µg,determined by LAL method.

Conjugation
Unconjugated

Expression system
CHO Cell

Format
Purified monoclonal antibody supplied in PBS, pH6.0, without preservative.This antibody is purified through a protein A column.

Anti-MUC18 / MCAM / CD146 Reference Antibody (imaprelimab) - Protein Information

Name MCAM

Synonyms MUC18

Function
Plays a role in cell adhesion, and in cohesion of the endothelial monolayer at intercellular junctions in vascular tissue. Its expression may allow melanoma cells to interact with cellular elements of the vascular system, thereby enhancing hematogeneous tumor spread. Could be an adhesion molecule active in neural crest cells during embryonic development. Acts as a surface receptor that triggers tyrosine phosphorylation of FYN and PTK2/FAK1, and a transient increase in the intracellular calcium concentration.

Cellular Location
Membrane; Single-pass type I membrane protein.

Tissue Location

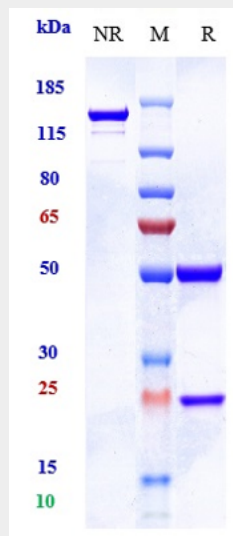
Detected in endothelial cells in vascular tissue throughout the body. May appear at the surface of neural crest cells during their embryonic migration. Appears to be limited to vascular smooth muscle in normal adult tissues. Associated with tumor progression and the development of metastasis in human malignant melanoma. Expressed most strongly on metastatic lesions and advanced primary tumors and is only rarely detected in benign melanocytic nevi and thin primary melanomas with a low probability of metastasis

Anti-MUC18 / MCAM / CD146 Reference Antibody (imaprelimab) - Protocols

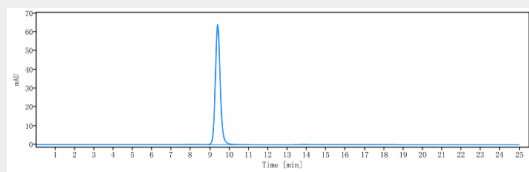
Provided below are standard protocols that you may find useful for product applications.

- [Western Blot](#)
- [Blocking Peptides](#)
- [Dot Blot](#)
- [Immunohistochemistry](#)
- [Immunofluorescence](#)
- [Immunoprecipitation](#)
- [Flow Cytometry](#)
- [Cell Culture](#)

Anti-MUC18 / MCAM / CD146 Reference Antibody (imaprelimab) - Images



Anti-MUC18 / MCAM / CD146 Reference Antibody (imaprelimab) on SDS-PAGE under reducing (R) condition. The gel was stained with Coomassie Blue. The purity of the protein is greater than 90%



The purity of Anti-MUC18 / MCAM / CD146 Reference Antibody (imaprelimab) is more than 95%, determined by SEC-HPLC.