

**Anti-CDH6 / K-Cadherin Reference Antibody (DS-6000a)**  
**Recombinant Antibody**  
**Catalog # APR10370****Specification**

---

**Anti-CDH6 / K-Cadherin Reference Antibody (DS-6000a) - Product Information**

Application	FC, E, FTA
Primary Accession	<a href="#">P55285</a>
Reactivity	Cynomolgus, Human
Clonality	Monoclonal
Isotype	IgG1
Calculated MW	145.54 KDa

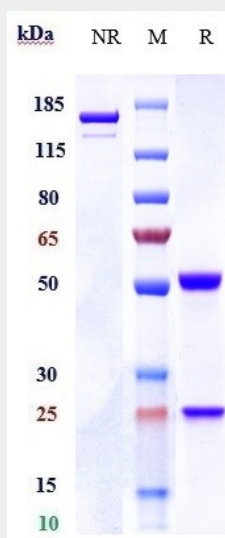
**Anti-CDH6 / K-Cadherin Reference Antibody (DS-6000a) - Additional Information****Target/Specificity**  
CDH6 / K-Cadherin**Endotoxin**  
< 0.001EU/ µg,determined by LAL method.**Conjugation**  
Unconjugated**Expression system**  
CHO Cell**Format**  
Purified monoclonal antibody supplied in PBS, pH6.0, without preservative.This antibody is purified through a protein A column.**Anti-CDH6 / K-Cadherin Reference Antibody (DS-6000a) - Protein Information****Name** CDH6**Function**  
Cadherins are calcium-dependent cell adhesion proteins. They preferentially interact with themselves in a homophilic manner in connecting cells; cadherins may thus contribute to the sorting of heterogeneous cell types.**Cellular Location**  
Cell membrane; Single-pass type I membrane protein**Tissue Location**  
Highly expressed in brain, cerebellum, and kidney. Lung, pancreas, and gastric mucosa show a weak expression. Also expressed in certain liver and kidney carcinomas

## Anti-CDH6 / K-Cadherin Reference Antibody (DS-6000a) - Protocols

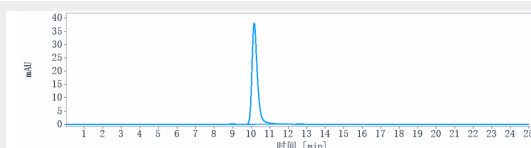
Provided below are standard protocols that you may find useful for product applications.

- [Western Blot](#)
- [Blocking Peptides](#)
- [Dot Blot](#)
- [Immunohistochemistry](#)
- [Immunofluorescence](#)
- [Immunoprecipitation](#)
- [Flow Cytometry](#)
- [Cell Culture](#)

## Anti-CDH6 / K-Cadherin Reference Antibody (DS-6000a) - Images



Anti-CDH6 / K-Cadherin Reference Antibody (DS-6000a) on SDS-PAGE under reducing (R) condition. The gel was stained with Coomassie Blue. The purity of the protein is greater than 95%



The purity of Anti-CDH6 / K-Cadherin Reference Antibody (DS-6000a) is more than 98.75%, determined by SEC-HPLC.