

**Anti-GFRA3 Reference Antibody (nadecnemab)  
Recombinant Antibody  
Catalog # APR10360****Specification**

---

**Anti-GFRA3 Reference Antibody (nadecnemab) - Product Information**

Application	FC, E, FTA
Primary Accession	<a href="#">O60609</a>
Reactivity	Cynomolgus, Human, Mouse
Clonality	Monoclonal
Isotype	IgG4SP
Calculated MW	145 KDa

**Anti-GFRA3 Reference Antibody (nadecnemab) - Additional Information****Target/Specificity**  
GFRA3**Endotoxin**  
< 0.001EU/ µg,determined by LAL method.**Conjugation**  
Unconjugated**Expression system**  
CHO Cell**Format**  
Purified monoclonal antibody supplied in PBS, pH6.0, without preservative.This antibody is purified through a protein A column.**Anti-GFRA3 Reference Antibody (nadecnemab) - Protein Information****Name** GFRA3**Function**  
Receptor for artemin (ARTN), a growth factor that supports the survival of sensory and sympathetic peripheral neurons (PubMed:<a href="http://www.uniprot.org/citations/31535977" target="\_blank">31535977</a>, PubMed:<a href="http://www.uniprot.org/citations/9883723" target="\_blank">9883723</a>). ARTN-binding leads to autophosphorylation and activation of the RET receptor (PubMed:<a href="http://www.uniprot.org/citations/31535977" target="\_blank">31535977</a>, PubMed:<a href="http://www.uniprot.org/citations/9883723" target="\_blank">9883723</a>).**Cellular Location**  
Cell membrane; Lipid-anchor, GPI-anchor**Tissue Location**

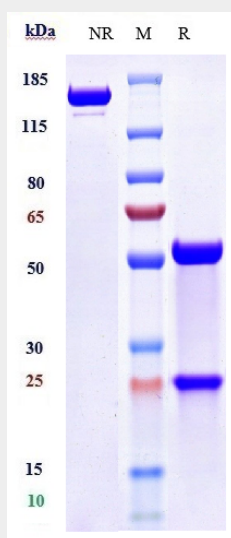
Widely expressed in adult and fetus which exhibit a similar pattern. Essentially not expressed in the central nervous system, but highly expressed in several sensory and sympathetic ganglia of the peripheral nervous system. Moderate expression in many non- neuronal tissues, particularly those of the digestive and urogenital systems, but high expression in stomach and appendix. Several types of glandular tissues show low expression. Very low or no expression detected in the hematopoietic system.

### Anti-GFRA3 Reference Antibody (nadecnemab) - Protocols

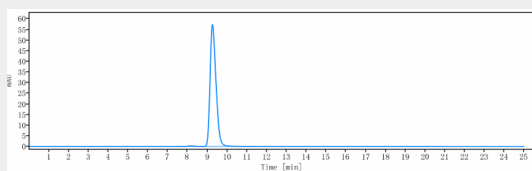
Provided below are standard protocols that you may find useful for product applications.

- [Western Blot](#)
- [Blocking Peptides](#)
- [Dot Blot](#)
- [Immunohistochemistry](#)
- [Immunofluorescence](#)
- [Immunoprecipitation](#)
- [Flow Cytometry](#)
- [Cell Culture](#)

### Anti-GFRA3 Reference Antibody (nadecnemab) - Images



Anti-GFRA3 Reference Antibody (nadecnemab) on SDS-PAGE under reducing (R) condition. The gel was stained with Coomassie Blue. The purity of the protein is greater than 90%



The purity of Anti-GFRA3 Reference Antibody (nadecnemab) is more than 95%, determined by SEC-HPLC.