

**Anti-IL-6Ra / CD126 Reference Antibody (sarilumab)  
Recombinant Antibody  
Catalog # APR10359****Specification**

---

**Anti-IL-6Ra / CD126 Reference Antibody (sarilumab) - Product Information**

Application	FC, E, FTA
Primary Accession	<a href="#">P08887</a>
Reactivity	Cynomolgus, Human
Clonality	Monoclonal
Isotype	IgG1
Calculated MW	144.12 KDa

**Anti-IL-6Ra / CD126 Reference Antibody (sarilumab) - Additional Information****Target/Specificity**  
IL-6Ra / CD126**Endotoxin**  
< 0.001EU/ µg,determined by LAL method.**Conjugation**  
Unconjugated**Expression system**  
CHO Cell**Format**  
Purified monoclonal antibody supplied in PBS, pH6.0, without preservative.This antibody is purified through a protein A column.**Anti-IL-6Ra / CD126 Reference Antibody (sarilumab) - Protein Information****Name** IL6R ([HGNC:6019](#))**Function**  
Part of the receptor for interleukin 6. Binds to IL6 with low affinity, but does not transduce a signal (PubMed:<a href="http://www.uniprot.org/citations/28265003" target="\_blank">28265003</a>). Signal activation necessitate an association with IL6ST. Activation leads to the regulation of the immune response, acute-phase reactions and hematopoiesis (PubMed:<a href="http://www.uniprot.org/citations/30995492" target="\_blank">30995492</a>, PubMed:<a href="http://www.uniprot.org/citations/31235509" target="\_blank">31235509</a>). The interaction with membrane-bound IL6R and IL6ST stimulates 'classic signaling', the restricted expression of the IL6R limits classic IL6 signaling to only a few tissues such as the liver and some cells of the immune system. Whereas the binding of IL6 and soluble IL6R to IL6ST stimulates 'trans- signaling'. Alternatively, 'cluster signaling' occurs when membrane- bound IL6:IL6R complexes on transmitter cells activate IL6ST receptors on neighboring receiver cells (Probable).

**Cellular Location**

[Isoform 1]: Cell membrane {ECO:0000250|UniProtKB:P22272}; Single-pass type I membrane protein [Soluble interleukin-6 receptor subunit alpha]: Secreted

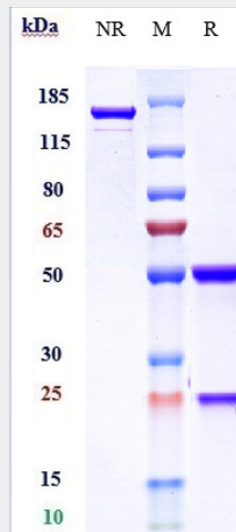
**Tissue Location**

[Isoform 2]: Expressed in peripheral blood mononuclear cells and weakly found in urine and serum. 1%-20% of the total sIL6R in plasma is generated by alternative splicing (PubMed:28060820).

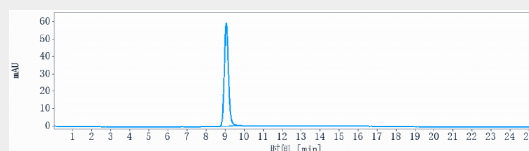
**Anti-IL-6Ra / CD126 Reference Antibody (sarilumab) - Protocols**

Provided below are standard protocols that you may find useful for product applications.

- [Western Blot](#)
- [Blocking Peptides](#)
- [Dot Blot](#)
- [Immunohistochemistry](#)
- [Immunofluorescence](#)
- [Immunoprecipitation](#)
- [Flow Cytometry](#)
- [Cell Culture](#)

**Anti-IL-6Ra / CD126 Reference Antibody (sarilumab) - Images**

Anti-IL-6Ra / CD126 Reference Antibody (sarilumab) on SDS-PAGE under reducing (R) condition. The gel was stained with Coomassie Blue. The purity of the protein is greater than 95%



The purity of Anti-IL-6Ra / CD126 Reference Antibody (sarilumab) is more than 95% ,determined by SEC-HPLC.