

**Anti-VEGF Reference Antibody (BioMab patent anti-VEGF)
Recombinant Antibody
Catalog # APR10355**

Specification

Anti-VEGF Reference Antibody (BioMab patent anti-VEGF) - Product Information

Application	FC, E, FTA
Primary Accession	P15692
Reactivity	Human, Rabbit
Clonality	Monoclonal
Isotype	IgG1
Calculated MW	49.19 KDa

Anti-VEGF Reference Antibody (BioMab patent anti-VEGF) - Additional Information

Target/Specificity
VEGF

Endotoxin
< 0.001EU/ µg,determined by LAL method.

Conjugation
Unconjugated

Expression system
CHO Cell

Format
Purified monoclonal antibody supplied in PBS, pH6.0, without preservative.This antibody is purified through a protein A column.

Anti-VEGF Reference Antibody (BioMab patent anti-VEGF) - Protein Information

Name VEGFA

Synonyms VEGF

Function
[N-VEGF]: Participates in the induction of key genes involved in the response to hypoxia and in the induction of angiogenesis such as HIF1A (PubMed:35455969). Involved in protecting cells from hypoxia- mediated cell death (By similarity).

Cellular Location
[N-VEGF]: Cytoplasm. Nucleus. Note=Cytoplasmic in normoxic conditions and localizes to the nucleus under hypoxic conditions [Isoform L-VEGF189]: Endoplasmic reticulum. Golgi apparatus. Secreted, extracellular space, extracellular matrix [Isoform VEGF165]: Secreted

Tissue Location

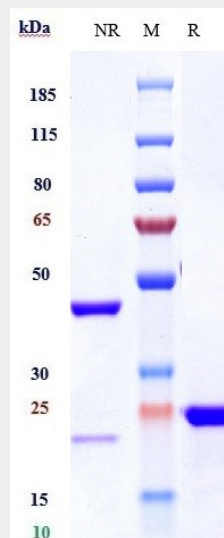
Higher expression in pituitary tumors than the pituitary gland. [Isoform VEGF165]: Widely expressed. [Isoform VEGF206]: Not widely expressed.

Anti-VEGF Reference Antibody (BioMab patent anti-VEGF) - Protocols

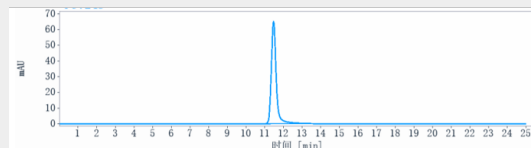
Provided below are standard protocols that you may find useful for product applications.

- [Western Blot](#)
- [Blocking Peptides](#)
- [Dot Blot](#)
- [Immunohistochemistry](#)
- [Immunofluorescence](#)
- [Immunoprecipitation](#)
- [Flow Cytometry](#)
- [Cell Culture](#)

Anti-VEGF Reference Antibody (BioMab patent anti-VEGF) - Images



Anti-VEGF Reference Antibody (BioMab patent anti-VEGF) on SDS-PAGE under reducing (R) condition. The gel was stained with Coomassie Blue. The purity of the protein is greater than 95%



The purity of Anti-VEGF Reference Antibody (BioMab patent anti-VEGF) is more than 100%, determined by SEC-HPLC.