

**Anti-TNFSF1 / TNFb/ LT alpha Reference Antibody (pateclizumab)
Recombinant Antibody
Catalog # APR10352****Specification****Anti-TNFSF1 / TNFb/ LT alpha Reference Antibody (pateclizumab) - Product Information**

Application	FC, E, FTA
Primary Accession	P01374
Reactivity	Cynomolgus, Human
Clonality	Monoclonal
Isotype	IgG1
Calculated MW	145 KDa

Anti-TNFSF1 / TNFb/ LT alpha Reference Antibody (pateclizumab) - Additional Information**Target/Specificity**

TNFSF1 / TNFb/ LT alpha

Endotoxin

< 0.001EU/ µg,determined by LAL method.

Conjugation

Unconjugated

Expression system

CHO Cell

Format

Purified monoclonal antibody supplied in PBS, pH6.0, without preservative.This antibody is purified through a protein A column.

Storage

-80°C for 2 years under sterile conditions □ -20°C for 1 year under sterile conditions □ Avoid repeated freeze-thaw cycles.

Anti-TNFSF1 / TNFb/ LT alpha Reference Antibody (pateclizumab) - Protein Information**Name** LTA**Synonyms** TNFB, TNFSF1**Function**

Cytokine that in its homotrimeric form binds to TNFRSF1A/TNFR1, TNFRSF1B/TNFR2 and TNFRSF14/HVEM (PubMed:9462508). In its heterotrimeric form with LTB binds to TNFRSF3/LTBR (PubMed:24248355). Lymphotoxin is produced by lymphocytes and is cytotoxic for a wide range of tumor cells in vitro

and in vivo.

Cellular Location

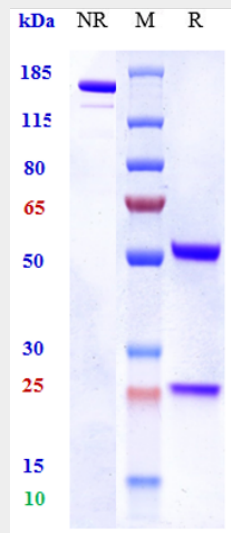
Secreted. Membrane. Note=The homotrimer is secreted. The heterotrimer is membrane-associated

Anti-TNFSF1 / TNFb/ LT alpha Reference Antibody (pateclizumab) - Protocols

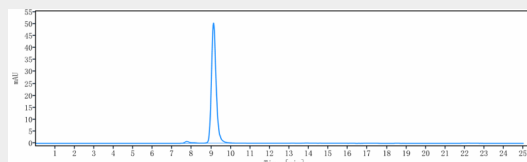
Provided below are standard protocols that you may find useful for product applications.

- [Western Blot](#)
- [Blocking Peptides](#)
- [Dot Blot](#)
- [Immunohistochemistry](#)
- [Immunofluorescence](#)
- [Immunoprecipitation](#)

Anti-TNFSF1 / TNFb/ LT alpha Reference Antibody (pateclizumab) - Images



Anti-TNFSF1 / TNFb/ LT alpha Reference Antibody (pateclizumab) on SDS-PAGE under reducing (R) condition. The gel was stained with Coomassie Blue. The purity of the protein is greater than 90%



The purity of Anti-TNFSF1 / TNFb/ LT alpha Reference Antibody (pateclizumab) is more than 95%, determined by SEC-HPLC.