

**Anti-Integrin a4b7 (ITGA4 & ITGB7) Reference Antibody (etrolizumab)
Recombinant Antibody
Catalog # APR10351****Specification**

Anti-Integrin a4b7 (ITGA4 & ITGB7) Reference Antibody (etrolizumab) - Product Information

Application	FC, E, FTA
Primary Accession	P13612 & P26010
Reactivity	Human
Clonality	Monoclonal
Isotype	IgG1
Calculated MW	144.3 KDa

Anti-Integrin a4b7 (ITGA4 & ITGB7) Reference Antibody (etrolizumab) - Additional Information**Target/Specificity**

Integrin a4b7 (ITGA4 & ITGB7)

Endotoxin

< 0.001EU/ µg,determined by LAL method.

Conjugation

Unconjugated

Expression system

CHO Cell

Format

Purified monoclonal antibody supplied in PBS, pH6.0, without preservative.This antibody is purified through a protein A column.

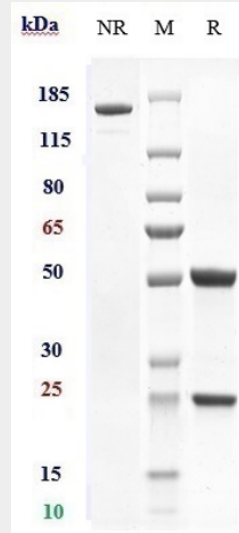
Anti-Integrin a4b7 (ITGA4 & ITGB7) Reference Antibody (etrolizumab) - Protein Information**Anti-Integrin a4b7 (ITGA4 & ITGB7) Reference Antibody (etrolizumab) - Protocols**

Provided below are standard protocols that you may find useful for product applications.

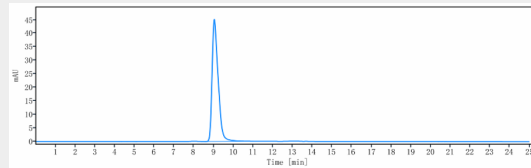
- [Western Blot](#)
- [Blocking Peptides](#)
- [Dot Blot](#)
- [Immunohistochemistry](#)
- [Immunofluorescence](#)
- [Immunoprecipitation](#)

- [Flow Cytometry](#)
- [Cell Culture](#)

Anti-Integrin α 4 β 7 (ITGA4 & ITGB7) Reference Antibody (etrolizumab) - Images



Anti-Integrin α 4 β 7 (ITGA4 & ITGB7) Reference Antibody (etrolizumab) on SDS-PAGE under reducing (R) condition. The gel was stained with Coomassie Blue. The purity of the protein is greater than 95%



The purity of Anti-Integrin α 4 β 7 (ITGA4 & ITGB7) Reference Antibody (etrolizumab) is more than 100% ,determined by SEC-HPLC.