

**Anti-TROP2 Reference Antibody (Sacituzumab govitecan)
Recombinant Antibody
Catalog # APR10342****Specification**

Anti-TROP2 Reference Antibody (Sacituzumab govitecan) - Product Information

Application	FC, E, FTA
Primary Accession	P09758
Reactivity	Cynomolgus, Human
Clonality	Monoclonal
Isotype	IgG1
Calculated MW	145 KDa

Anti-TROP2 Reference Antibody (Sacituzumab govitecan) - Additional Information**Target/Specificity**
TROP2**Endotoxin**
< 0.001EU/ µg,determined by LAL method.**Conjugation**
SN38**Expression system**
CHO Cell**Format**
Purified monoclonal antibody supplied in PBS, pH6.0, without preservative.This antibody is purified through a protein A column.**Storage**
-80°C for 2 years under sterile conditions □ -20°C for 1 year under sterile conditions □ Avoid repeated freeze-thaw cycles.**Anti-TROP2 Reference Antibody (Sacituzumab govitecan) - Protein Information****Name** TACSTD2**Synonyms** GA733-1, M1S1, TROP2**Function**
May function as a growth factor receptor.**Cellular Location**
Membrane; Single-pass type I membrane protein.**Tissue Location**

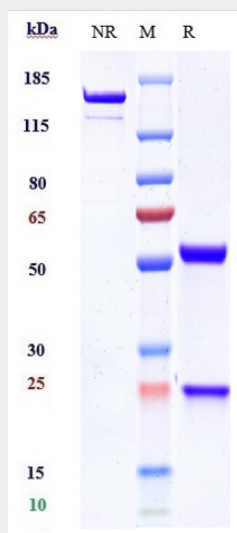
Placenta, pancreatic carcinoma cell lines.

Anti-TROP2 Reference Antibody (Sacituzumab govitecan) - Protocols

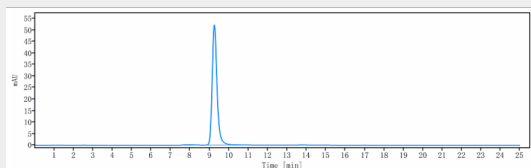
Provided below are standard protocols that you may find useful for product applications.

- [Western Blot](#)
- [Blocking Peptides](#)
- [Dot Blot](#)
- [Immunohistochemistry](#)
- [Immunofluorescence](#)
- [Immunoprecipitation](#)
- [Flow Cytometry](#)
- [Cell Culture](#)

Anti-TROP2 Reference Antibody (Sacituzumab govitecan) - Images



Anti-TROP2 Reference Antibody (Sacituzumab govitecan) on SDS-PAGE under reducing (R) condition. The gel was stained with Coomassie Blue. The purity of the protein is greater than 90%



The purity of Anti-TROP2 Reference Antibody (Sacituzumab govitecan) is more than 95%, determined by SEC-HPLC.