

**Anti-LAMP1 / CD107a Reference Antibody ( SAR428926)  
Recombinant Antibody  
Catalog # APR10341****Specification****Anti-LAMP1 / CD107a Reference Antibody ( SAR428926) - Product Information**

Application	FC, E, FTA
Primary Accession	<a href="#">P11279</a>
Reactivity	Cynomolgus, Human
Clonality	Monoclonal
Isotype	IgG1
Calculated MW	144.78 KDa

**Anti-LAMP1 / CD107a Reference Antibody ( SAR428926) - Additional Information****Target/Specificity**  
LAMP1 / CD107a**Endotoxin**  
< 0.001EU/ µg, determined by LAL method.**Conjugation**  
Unconjugated**Expression system**  
CHO Cell**Format**  
Purified monoclonal antibody supplied in PBS, pH6.0, without preservative. This antibody is purified through a protein A column.**Anti-LAMP1 / CD107a Reference Antibody ( SAR428926) - Protein Information****Name** LAMP1 {ECO:0000303|PubMed:23632890, ECO:0000312|HGNC:HGNC:6499}**Function**  
Lysosomal membrane glycoprotein which plays an important role in lysosome biogenesis, lysosomal pH regulation, autophagy and cholesterol homeostasis (PubMed:<a href="http://www.uniprot.org/citations/37390818" target="\_blank">37390818</a>). Acts as an important regulator of lysosomal lumen pH regulation by acting as a direct inhibitor of the proton channel TMEM175, facilitating lysosomal acidification for optimal hydrolase activity (PubMed:<a href="http://www.uniprot.org/citations/37390818" target="\_blank">37390818</a>). Also plays an important role in NK-cells cytotoxicity (PubMed:<a href="http://www.uniprot.org/citations/2022921" target="\_blank">2022921</a>, PubMed:<a href="http://www.uniprot.org/citations/23632890" target="\_blank">23632890</a>). Mechanistically, participates in cytotoxic granule movement to the cell surface and perforin trafficking to the lytic granule (PubMed:<a href="http://www.uniprot.org/citations/23632890" target="\_blank">23632890</a>). In addition, protects NK-cells from degranulation-associated

damage induced by their own cytotoxic granule content (PubMed:<a href="http://www.uniprot.org/citations/23847195" target="\_blank">23847195</a>). Presents carbohydrate ligands to selectins (PubMed:<a href="http://www.uniprot.org/citations/7685349" target="\_blank">7685349</a>).

#### Cellular Location

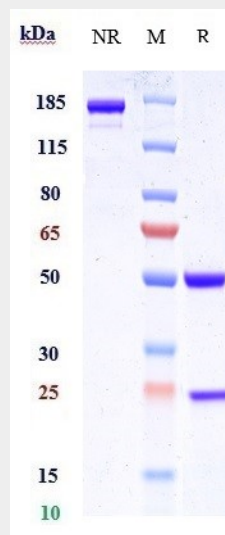
Lysosome membrane; Single-pass type I membrane protein. Endosome membrane; Single-pass type I membrane protein. Late endosome membrane; Single-pass type I membrane protein. Cell membrane; Single-pass type I membrane protein. Cytolytic granule membrane; Single-pass type I membrane protein. Note=This protein shuttles between lysosomes, endosomes, and the plasma membrane (By similarity). Colocalizes with OSBPL1A at the late endosome (PubMed:16176980). {ECO:0000250|UniProtKB:P05300, ECO:0000269|PubMed:16176980, ECO:0000269|PubMed:17897319}

#### Anti-LAMP1 / CD107a Reference Antibody ( SAR428926) - Protocols

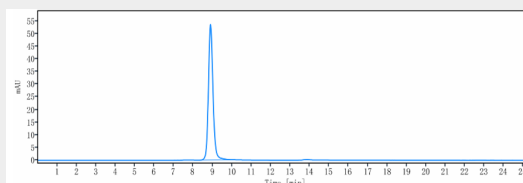
Provided below are standard protocols that you may find useful for product applications.

- [Western Blot](#)
- [Blocking Peptides](#)
- [Dot Blot](#)
- [Immunohistochemistry](#)
- [Immunofluorescence](#)
- [Immunoprecipitation](#)
- [Flow Cytometry](#)
- [Cell Culture](#)

#### Anti-LAMP1 / CD107a Reference Antibody ( SAR428926) - Images



Anti-LAMP1 / CD107a Reference Antibody ( SAR428926) on SDS-PAGE under reducing (R) condition. The gel was stained with Coomassie Blue. The purity of the protein is greater than 95%



The purity of Anti-LAMP1 / CD107a Reference Antibody ( SAR428926) is more than 100% ,determined by SEC-HPLC.