

**Anti-IL-33 Reference Antibody (itepekimab)
Recombinant Antibody
Catalog # APR10338**

Specification

Anti-IL-33 Reference Antibody (itepekimab) - Product Information

Application	FC, E, FTA
Primary Accession	O95760
Reactivity	Cynomolgus, Human
Clonality	Monoclonal
Isotype	IgG4SP
Calculated MW	144.64 KDa

Anti-IL-33 Reference Antibody (itepekimab) - Additional Information

Target/Specificity
IL-33

Endotoxin
< 0.001EU/ µg,determined by LAL method.

Conjugation
Unconjugated

Expression system
CHO Cell

Format
Purified monoclonal antibody supplied in PBS, pH6.0, without preservative.This antibody is purified through a protein A column.

Anti-IL-33 Reference Antibody (itepekimab) - Protein Information

Name IL33 ([HGNC:16028](#))

Synonyms C9orf26, IL1F11, NFHEV

Function

Cytokine that binds to and signals through the IL1RL1/ST2 receptor which in turn activates NF-kappa-B and MAPK signaling pathways in target cells (PubMed:16286016, PubMed:19841166). Involved in the maturation of Th2 cells inducing the secretion of T-helper type 2- associated cytokines (PubMed:17853410, PubMed:18836528). Also involved in activation of mast cells, basophils, eosinophils and natural killer cells (PubMed:17853410, PubMed:18836528). Acts as an

enhancer of polarization of alternatively activated macrophages (PubMed:19841166). Acts as a chemoattractant for Th2 cells, and may function as an 'alarmin', that amplifies immune responses during tissue injury (PubMed:17853410, PubMed:18836528). Induces rapid UCP2-dependent mitochondrial rewiring that attenuates the generation of reactive oxygen species and preserves the integrity of Krebs cycle required for persistent production of itaconate and subsequent GATA3-dependent differentiation of inflammation-resolving alternatively activated macrophages (By similarity).

Cellular Location

Nucleus. Chromosome. Cytoplasm Cytoplasmic vesicle, secretory vesicle Secreted Note=Secreted and released in the extracellular milieu by passing through the gasdermin-D (GSDMD) pore following cleavage by CELA1 (PubMed:35794369). Associates with heterochromatin and mitotic chromosomes (PubMed:17185418). The secretion is dependent on protein unfolding and facilitated by the cargo receptor TMED10; it results in protein translocation from the cytoplasm into the ERGIC (endoplasmic reticulum-Golgi intermediate compartment) followed by vesicle entry and secretion (PubMed:32272059).

Tissue Location

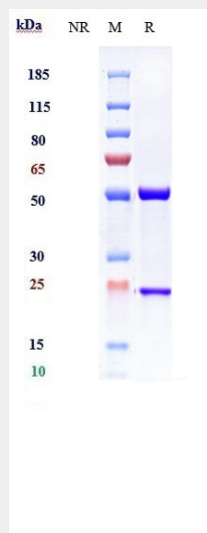
Expressed at high level in high endothelial venules found in tonsils, Peyer patches and mesenteric lymph nodes. Almost undetectable in placenta.

Anti-IL-33 Reference Antibody (itepekimab) - Protocols

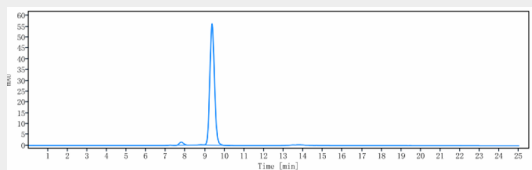
Provided below are standard protocols that you may find useful for product applications.

- [Western Blot](#)
- [Blocking Peptides](#)
- [Dot Blot](#)
- [Immunohistochemistry](#)
- [Immunofluorescence](#)
- [Immunoprecipitation](#)
- [Flow Cytometry](#)
- [Cell Culture](#)

Anti-IL-33 Reference Antibody (itepekimab) - Images



Anti-IL-33 Reference Antibody (itepekimab) on SDS-PAGE under reducing (R) condition. The gel was stained with Coomassie Blue. The purity of the protein is greater than 95%



The purity of Anti-IL-33 Reference Antibody (itepekimab) is more than 97.5% ,determined by SEC-HPLC.