

**Anti-TNFRSF5 / CD40 Reference Antibody (sotigalimab)
Recombinant Antibody
Catalog # APR10324****Specification**

Anti-TNFRSF5 / CD40 Reference Antibody (sotigalimab) - Product Information

Application	FC, E, FTA
Primary Accession	P25942
Reactivity	Cynomolgus, Human
Clonality	Monoclonal
Isotype	IgG1
Calculated MW	144.54 KDa

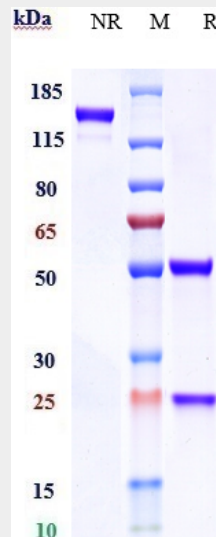
Anti-TNFRSF5 / CD40 Reference Antibody (sotigalimab) - Additional Information**Target/Specificity**
TNFRSF5 / CD40**Endotoxin**
< 0.001EU/ µg,determined by LAL method.**Conjugation**
Unconjugated**Expression system**
CHO Cell**Format**
Purified monoclonal antibody supplied in PBS, pH6.0, without preservative.This antibody is purified through a protein A column.**Anti-TNFRSF5 / CD40 Reference Antibody (sotigalimab) - Protein Information****Name** CD40**Synonyms** TNFRSF5**Function**
Receptor for TNFSF5/CD40LG (PubMed:31331973). Transduces TRAF6- and MAP3K8-mediated signals that activate ERK in macrophages and B cells, leading to induction of immunoglobulin secretion (By similarity).**Cellular Location**
[Isoform I]: Cell membrane; Single-pass type I membrane protein**Tissue Location**
B-cells and in primary carcinomas.

Anti-TNFRSF5 / CD40 Reference Antibody (sotigalimab) - Protocols

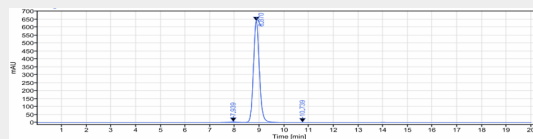
Provided below are standard protocols that you may find useful for product applications.

- [Western Blot](#)
- [Blocking Peptides](#)
- [Dot Blot](#)
- [Immunohistochemistry](#)
- [Immunofluorescence](#)
- [Immunoprecipitation](#)
- [Flow Cytometry](#)
- [Cell Culture](#)

Anti-TNFRSF5 / CD40 Reference Antibody (sotigalimab) - Images



Anti-TNFRSF5 / CD40 Reference Antibody (sotigalimab) on SDS-PAGE under reducing (R) condition. The gel was stained with Coomassie Blue. The purity of the protein is greater than 95%



The purity of Anti-TNFRSF5 / CD40 Reference Antibody (sotigalimab) is more than 98.9%, determined by SEC-HPLC.