

**Anti-GDF8 / Myostatin Reference Antibody (apitegromab)
Recombinant Antibody
Catalog # APR10323**

Specification

Anti-GDF8 / Myostatin Reference Antibody (apitegromab) - Product Information

| | |
|-------------------|------------------------|
| Application | FC, E, FTA |
| Primary Accession | O14793 |
| Reactivity | Human |
| Clonality | Monoclonal |
| Isotype | IgG4SP |
| Calculated MW | 145.06 KDa |

Anti-GDF8 / Myostatin Reference Antibody (apitegromab) - Additional Information

Target/Specificity
GDF8 / Myostatin

Endotoxin
< 0.001EU/ µg,determined by LAL method.

Conjugation
Unconjugated

Expression system
CHO Cell

Format
Purified monoclonal antibody supplied in PBS, pH6.0, without preservative.This antibody is purified through a protein A column.

Anti-GDF8 / Myostatin Reference Antibody (apitegromab) - Protein Information

Name MSTN

Synonyms GDF8

Function
Acts specifically as a negative regulator of skeletal muscle growth.

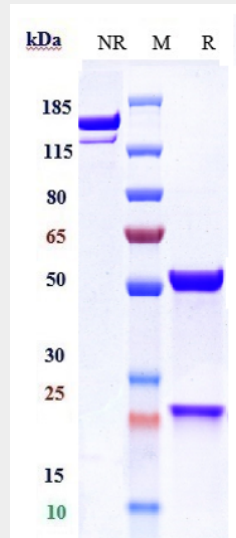
Cellular Location
Secreted {ECO:0000250|UniProtKB:O08689}.

Anti-GDF8 / Myostatin Reference Antibody (apitegromab) - Protocols

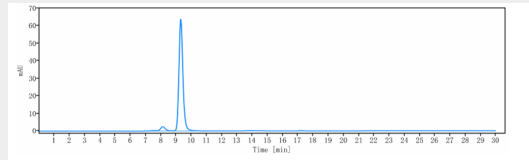
Provided below are standard protocols that you may find useful for product applications.

- [Western Blot](#)
- [Blocking Peptides](#)
- [Dot Blot](#)
- [Immunohistochemistry](#)
- [Immunofluorescence](#)
- [Immunoprecipitation](#)
- [Flow Cytometry](#)
- [Cell Culture](#)

Anti-GDF8 / Myostatin Reference Antibody (apitegromab) - Images



Anti-GDF8 / Myostatin Reference Antibody (apitegromab) on SDS-PAGE under reducing (R) condition. The gel was stained with Coomassie Blue. The purity of the protein is greater than 95%



The purity of Anti-GDF8 / Myostatin Reference Antibody (apitegromab) is more than 94.94 %, determined by SEC-HPLC.