

**Anti-Integrin  $\alpha$ V $\beta$ 6 (ITGAV & ITGB6) Reference Antibody (STX-100)  
Recombinant Antibody  
Catalog # APR10321**

**Specification**

---

**Anti-Integrin  $\alpha$ V $\beta$ 6 (ITGAV & ITGB6) Reference Antibody (STX-100) - Product Information**

|                   |                                     |
|-------------------|-------------------------------------|
| Application       | FC, E, FTA                          |
| Primary Accession | <a href="#">P06756 &amp; P18564</a> |
| Reactivity        | Human                               |
| Clonality         | Monoclonal                          |
| Isotype           | IgG1                                |
| Calculated MW     | 145.12 KDa                          |

**Anti-Integrin  $\alpha$ V $\beta$ 6 (ITGAV & ITGB6) Reference Antibody (STX-100) - Additional Information**

**Target/Specificity**

Integrin  $\alpha$ V $\beta$ 6 (ITGAV & ITGB6)

**Endotoxin**

< 0.001EU/  $\mu$ g, determined by LAL method.

**Conjugation**

Unconjugated

**Expression system**

CHO Cell

**Format**

Purified monoclonal antibody supplied in PBS, pH6.0, without preservative. This antibody is purified through a protein A column.

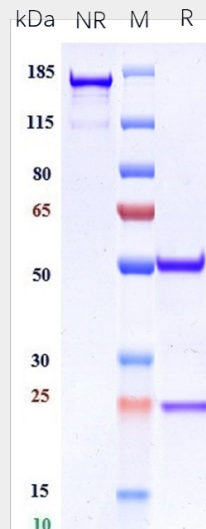
**Anti-Integrin  $\alpha$ V $\beta$ 6 (ITGAV & ITGB6) Reference Antibody (STX-100) - Protein Information**

**Anti-Integrin  $\alpha$ V $\beta$ 6 (ITGAV & ITGB6) Reference Antibody (STX-100) - Protocols**

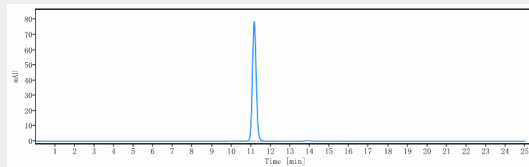
Provided below are standard protocols that you may find useful for product applications.

- [Western Blot](#)
- [Blocking Peptides](#)
- [Dot Blot](#)
- [Immunohistochemistry](#)
- [Immunofluorescence](#)
- [Immunoprecipitation](#)
- [Flow Cytometry](#)
- [Cell Culture](#)

## Anti-Integrin $\alpha$ V $\beta$ 6 (ITGAV & ITGB6) Reference Antibody (STX-100) - Images



Anti-Integrin  $\alpha$ V $\beta$ 6 (ITGAV & ITGB6) Reference Antibody (STX-100) on SDS-PAGE under reducing (R) condition. The gel was stained with Coomassie Blue. The purity of the protein is greater than 95%



The purity of Anti-Integrin  $\alpha$ V $\beta$ 6 (ITGAV & ITGB6) Reference Antibody (STX-100) is more than 95% ,determined by SEC-HPLC.