

**Anti-BTLA / CD272 Reference Antibody (Tifcemalimab)  
Recombinant Antibody  
Catalog # APR10320****Specification****Anti-BTLA / CD272 Reference Antibody (Tifcemalimab) - Product Information**

Application	FC, E, FTA
Primary Accession	<a href="#">O7Z6A9</a>
Reactivity	Human
Clonality	Monoclonal
Isotype	IgG4
Calculated MW	146 KDa

**Anti-BTLA / CD272 Reference Antibody (Tifcemalimab) - Additional Information****Target/Specificity**

BTLA / CD272

**Endotoxin**

&lt; 0.001EU/ µg, determined by LAL method.

**Conjugation**

Unconjugated

**Expression system**

CHO Cell

**Format**

Purified monoclonal antibody supplied in PBS, pH6.0, without preservative. This antibody is purified through a protein A column.

**Anti-BTLA / CD272 Reference Antibody (Tifcemalimab) - Protein Information****Name** BTLA {ECO:0000303|PubMed:12796776, ECO:0000312|HGNC:HGNC:21087}**Function**

Inhibitory receptor on lymphocytes that negatively regulates antigen receptor signaling via PTPN6/SHP-1 and PTPN11/SHP-2 (PubMed: [12796776](http://www.uniprot.org/citations/12796776), PubMed: [14652006](http://www.uniprot.org/citations/14652006), PubMed: [15568026](http://www.uniprot.org/citations/15568026), PubMed: [18193050](http://www.uniprot.org/citations/18193050)). May interact in cis (on the same cell) or in trans (on other cells) with TNFRSF14 (PubMed: [19915044](http://www.uniprot.org/citations/19915044)). In cis interactions, appears to play an immune regulatory role inhibiting in trans interactions in naive T cells to maintain a resting state. In trans interactions, can predominate during adaptive immune response to provide survival signals to effector T cells (PubMed: [19915044](http://www.uniprot.org/citations/19915044)).

### Cellular Location

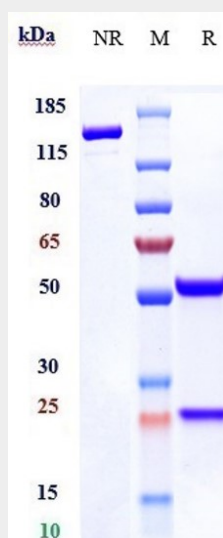
Cell membrane; Single-pass type I membrane protein

### Anti-BTLA / CD272 Reference Antibody (Tifcemalimab) - Protocols

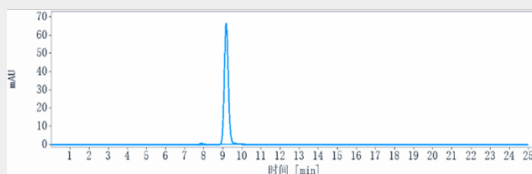
Provided below are standard protocols that you may find useful for product applications.

- [Western Blot](#)
- [Blocking Peptides](#)
- [Dot Blot](#)
- [Immunohistochemistry](#)
- [Immunofluorescence](#)
- [Immunoprecipitation](#)
- [Flow Cytometry](#)
- [Cell Culture](#)

### Anti-BTLA / CD272 Reference Antibody (Tifcemalimab) - Images



Anti-BTLA / CD272 Reference Antibody (Tifcemalimab) on SDS-PAGE under reducing (R) condition. The gel was stained with Coomassie Blue. The purity of the protein is greater than 95%



The purity of Anti-BTLA / CD272 Reference Antibody (Tifcemalimab) is more than 98.17%, determined by SEC-HPLC.