

**Anti-CD2 Reference Antibody (siplizumab)
Recombinant Antibody
Catalog # APR10316**

Specification

Anti-CD2 Reference Antibody (siplizumab) - Product Information

Application	FC, E, FTA
Primary Accession	P06729
Reactivity	Cynomolgus, Human
Clonality	Monoclonal
Isotype	IgG1
Calculated MW	145 KDa

Anti-CD2 Reference Antibody (siplizumab) - Additional Information

Target/Specificity
CD2

Endotoxin
< 0.001EU/ µg,determined by LAL method.

Conjugation
Unconjugated

Expression system
CHO Cell

Format
Purified monoclonal antibody supplied in PBS, pH6.0, without preservative.This antibody is purified through a protein A column.

Anti-CD2 Reference Antibody (siplizumab) - Protein Information

Name CD2

Synonyms SRBC

Function
CD2 interacts with lymphocyte function-associated antigen CD58 (LFA-3) and CD48/BCM1 to mediate adhesion between T-cells and other cell types. CD2 is implicated in the triggering of T-cells, the cytoplasmic domain is implicated in the signaling function.

Cellular Location
Cell membrane; Single-pass type I membrane protein

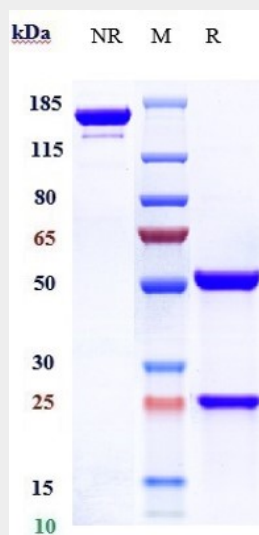
Tissue Location
Expressed in natural killer cells (at protein level).

Anti-CD2 Reference Antibody (siplizumab) - Protocols

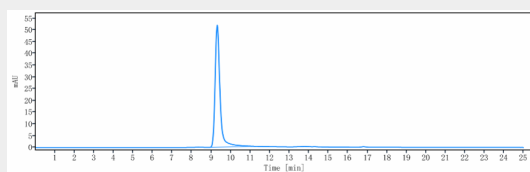
Provided below are standard protocols that you may find useful for product applications.

- [Western Blot](#)
- [Blocking Peptides](#)
- [Dot Blot](#)
- [Immunohistochemistry](#)
- [Immunofluorescence](#)
- [Immunoprecipitation](#)
- [Flow Cytometry](#)
- [Cell Culture](#)

Anti-CD2 Reference Antibody (siplizumab) - Images



Anti-CD2 Reference Antibody (siplizumab) on SDS-PAGE under reducing (R) condition. The gel was stained with Coomassie Blue. The purity of the protein is greater than 95%



The purity of Anti-CD2 Reference Antibody (siplizumab) is more than 100% ,determined by SEC-HPLC.