

**Anti-NT5E / CD73 Reference Antibody (uliledlimab)
Recombinant Antibody
Catalog # APR10313****Specification**

Anti-NT5E / CD73 Reference Antibody (uliledlimab) - Product Information

| | |
|-------------------|------------------------|
| Application | FC, E, FTA |
| Primary Accession | P21589 |
| Reactivity | Cynomolgus, Human |
| Clonality | Monoclonal |
| Isotype | IgG1 |
| Calculated MW | 145.04 KDa |

Anti-NT5E / CD73 Reference Antibody (uliledlimab) - Additional Information**Target/Specificity**

NT5E / CD73

Endotoxin

< 0.001EU/ µg, determined by LAL method.

Conjugation

Unconjugated

Expression system

CHO Cell

Format

Purified monoclonal antibody supplied in PBS, pH6.0, without preservative. This antibody is purified through a protein A column.

Anti-NT5E / CD73 Reference Antibody (uliledlimab) - Protein Information**Name** NT5E**Synonyms** NT5, NTE**Function**

Catalyzes the hydrolysis of nucleotide monophosphates, releasing inorganic phosphate and the corresponding nucleoside, with AMP being the preferred substrate (PubMed: [21933152](http://www.uniprot.org/citations/21933152), PubMed: [22997138](http://www.uniprot.org/citations/22997138), PubMed: [23142347](http://www.uniprot.org/citations/23142347), PubMed: [24887587](http://www.uniprot.org/citations/24887587), PubMed: [34403084](http://www.uniprot.org/citations/34403084)). Shows a preference for ribonucleotide monophosphates over their equivalent deoxyribose forms (PubMed: [34403084](http://www.uniprot.org/citations/34403084)). Other substrates include IMP, UMP, GMP, CMP, dAMP, dCMP, dTMP, NAD and NMN (PubMed: [34403084](http://www.uniprot.org/citations/34403084)).

href="http://www.uniprot.org/citations/21933152" target="_blank">21933152, PubMed:22997138, PubMed:23142347, PubMed:24887587, PubMed:34403084).

Cellular Location

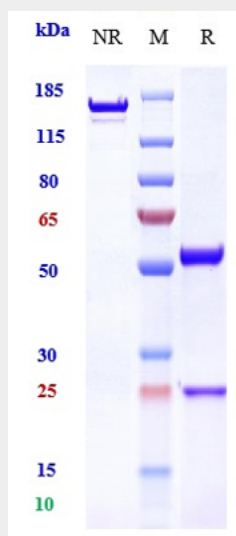
Cell membrane; Lipid-anchor, GPI-anchor

Anti-NT5E / CD73 Reference Antibody (uliledlimab) - Protocols

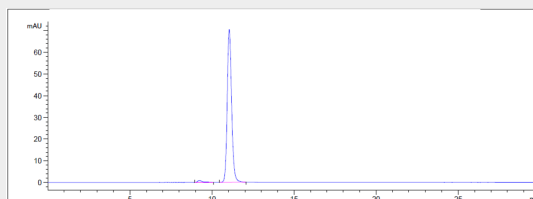
Provided below are standard protocols that you may find useful for product applications.

- [Western Blot](#)
- [Blocking Peptides](#)
- [Dot Blot](#)
- [Immunohistochemistry](#)
- [Immunofluorescence](#)
- [Immunoprecipitation](#)
- [Flow Cytometry](#)
- [Cell Culture](#)

Anti-NT5E / CD73 Reference Antibody (uliledlimab) - Images



Anti-NT5E / CD73 Reference Antibody (uliledlimab) on SDS-PAGE under reducing (R) condition. The gel was stained with Coomassie Blue. The purity of the protein is greater than 95%



The purity of Anti-NT5E / CD73 Reference Antibody (uliledlimab) is more than 98.34%, determined by SEC-HPLC.