

**Anti-ENTPD1 / CD39 Reference Antibody (TTX-030)  
Recombinant Antibody  
Catalog # APR10301**

**Specification**

---

**Anti-ENTPD1 / CD39 Reference Antibody (TTX-030) - Product Information**

Application	FC, E, FTA
Primary Accession	<a href="#">P49961</a>
Reactivity	Human
Clonality	Monoclonal
Isotype	IgG4
Calculated MW	150 KDa

**Anti-ENTPD1 / CD39 Reference Antibody (TTX-030) - Additional Information**

**Target/Specificity**  
ENTPD1 / CD39

**Endotoxin**  
< 0.001EU/ µg,determined by LAL method.

**Conjugation**  
Unconjugated

**Expression system**  
CHO Cell

**Format**  
Purified monoclonal antibody supplied in PBS, pH6.0, without preservative.This antibody is purified through a protein A column.

**Anti-ENTPD1 / CD39 Reference Antibody (TTX-030) - Protein Information**

**Name** ENTPD1 ([HGNC:3363](#))

**Function**  
Catalyzes the hydrolysis of both di- and triphosphate nucleotides (NDPs and NTPs) and hydrolyze NTPs to nucleotide monophosphates (NMPs) in two distinct successive phosphate-releasing steps, with NDPs as intermediates and participates in the regulation of extracellular levels of nucleotides (Probable) (PubMed: [8529670](http://www.uniprot.org/citations/8529670)), PubMed: [8626624](http://www.uniprot.org/citations/8626624)), PubMed: [8955160](http://www.uniprot.org/citations/8955160)), PubMed: [8996251](http://www.uniprot.org/citations/8996251)). By hydrolyzing proinflammatory ATP and platelet-activating ADP to AMP, it blocks platelet aggregation and supports blood flow (PubMed: [8955160](http://www.uniprot.org/citations/8955160)), PubMed: [8996251](http://www.uniprot.org/citations/8996251)).

### Cellular Location

Membrane; Multi-pass membrane protein. Membrane, caveola

### Tissue Location

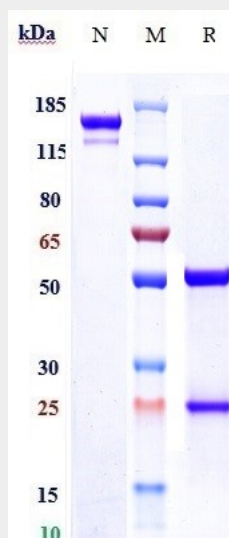
Expressed primarily on activated lymphoid cells (PubMed:7930580). Also expressed in endothelial tissues (PubMed:8955160). Highly expressed in placenta, lung, skeletal muscle, kidney (PubMed:8955160).

### Anti-ENTPD1 / CD39 Reference Antibody (TTX-030) - Protocols

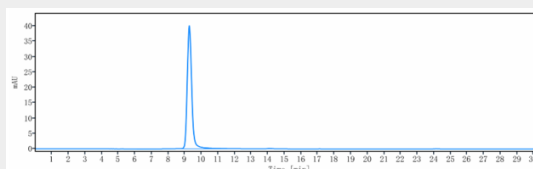
Provided below are standard protocols that you may find useful for product applications.

- [Western Blot](#)
- [Blocking Peptides](#)
- [Dot Blot](#)
- [Immunohistochemistry](#)
- [Immunofluorescence](#)
- [Immunoprecipitation](#)
- [Flow Cytometry](#)
- [Cell Culture](#)

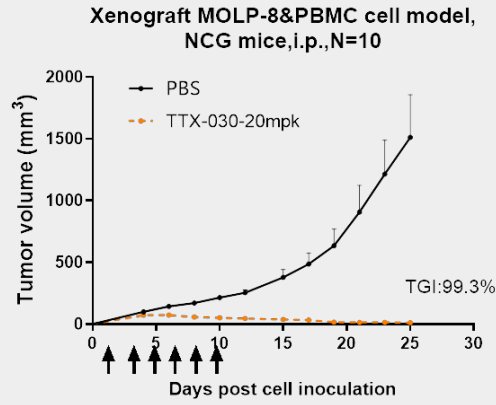
### Anti-ENTPD1 / CD39 Reference Antibody (TTX-030) - Images



Anti-ENTPD1 / CD39 Reference Antibody (TTX-030) on SDS-PAGE under reducing (R) condition. The gel was stained with Coomassie Blue. The purity of the protein is greater than 95%



The purity of Anti-ENTPD1 / CD39 Reference Antibody (TTX-030) is more than 99.83%, determined by SEC-HPLC.



TTX-030 inhibited the tumor growth of MOLP-8 on NCG mice. The result showed significant anti-tumor effects, with an tumor inhibition rate (TGI) of 99.3% at 20 mpk at D25.