

**Anti-EpCAM / TROP1 / CD326 Reference Antibody (Tucotuzumab)  
Recombinant Antibody  
Catalog # APR10300****Specification**

---

**Anti-EpCAM / TROP1 / CD326 Reference Antibody (Tucotuzumab) - Product Information**

Application	FC, E, FTA
Primary Accession	<a href="#">P16422</a>
Reactivity	Human
Clonality	Monoclonal
Isotype	IgG1
Calculated MW	144.34 KDa

**Anti-EpCAM / TROP1 / CD326 Reference Antibody (Tucotuzumab) - Additional Information****Target/Specificity**

EpCAM / TROP1 / CD326

**Endotoxin**

&lt; 0.001EU/ µg,determined by LAL method.

**Conjugation**

Unconjugated

**Expression system**

CHO Cell

**Format**

Purified monoclonal antibody supplied in PBS, pH6.0, without preservative.This antibody is purified through a protein A column.

**Anti-EpCAM / TROP1 / CD326 Reference Antibody (Tucotuzumab) - Protein Information****Name** EPCAM**Synonyms** GA733-2, M1S2, M4S1, MIC18, TACSTD1, TRO**Function**

May act as a physical homophilic interaction molecule between intestinal epithelial cells (IECs) and intraepithelial lymphocytes (IELs) at the mucosal epithelium for providing immunological barrier as a first line of defense against mucosal infection. Plays a role in embryonic stem cells proliferation and differentiation. Up-regulates the expression of FABP5, MYC and cyclins A and E.

**Cellular Location**Lateral cell membrane; Single-pass type I membrane protein. Cell junction, tight junction.  
Note=Colocalizes with CLDN7 at the lateral cell membrane and tight junction**Tissue Location**

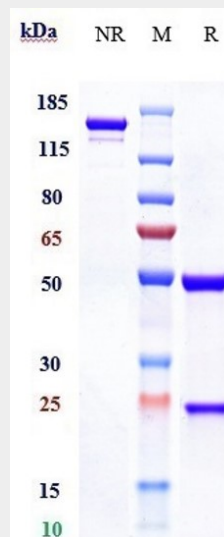
Highly and selectively expressed by undifferentiated rather than differentiated embryonic stem cells (ESC) Levels rapidly diminish as soon as ESC's differentiate (at protein levels). Expressed in almost all epithelial cell membranes but not on mesodermal or neural cell membranes. Found on the surface of adenocarcinoma.

### Anti-EpCAM / TROP1 / CD326 Reference Antibody (Tucotuzumab) - Protocols

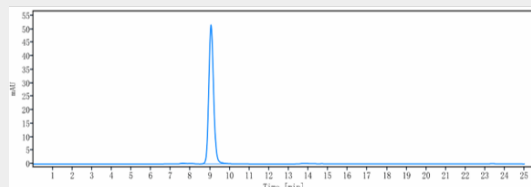
Provided below are standard protocols that you may find useful for product applications.

- [Western Blot](#)
- [Blocking Peptides](#)
- [Dot Blot](#)
- [Immunohistochemistry](#)
- [Immunofluorescence](#)
- [Immunoprecipitation](#)
- [Flow Cytometry](#)
- [Cell Culture](#)

### Anti-EpCAM / TROP1 / CD326 Reference Antibody (Tucotuzumab) - Images



Anti-EpCAM / TROP1 / CD326 Reference Antibody (Tucotuzumab) on SDS-PAGE under reducing (R) condition. The gel was stained with Coomassie Blue. The purity of the protein is greater than 95%



The purity of Anti-EpCAM / TROP1 / CD326 Reference Antibody (Tucotuzumab) is more than 99.28% ,determined by SEC-HPLC.