

**Anti-Integrin  $\alpha$ 4 / ITGA4 / CD49d Reference Antibody (natalizumab)  
Recombinant Antibody  
Catalog # APR10298****Specification**

---

**Anti-Integrin  $\alpha$ 4 / ITGA4 / CD49d Reference Antibody (natalizumab) - Product Information**

Application	FC, E, FTA
Primary Accession	<a href="#">P13612</a>
Reactivity	Human
Clonality	Monoclonal
Isotype	IgG4
Calculated MW	146.22 KDa

**Anti-Integrin  $\alpha$ 4 / ITGA4 / CD49d Reference Antibody (natalizumab) - Additional Information****Target/Specificity**Integrin  $\alpha$ 4 / ITGA4 / CD49d**Endotoxin**< 0.001EU/  $\mu$ g, determined by LAL method.**Conjugation**

Unconjugated

**Expression system**

CHO Cell

**Format**

Purified monoclonal antibody supplied in PBS, pH6.0, without preservative. This antibody is purified through a protein A column.

**Anti-Integrin  $\alpha$ 4 / ITGA4 / CD49d Reference Antibody (natalizumab) - Protein Information****Name** ITGA4**Synonyms** CD49D**Function**

Integrins  $\alpha$ -4/ $\beta$ -1 (VLA-4) and  $\alpha$ -4/ $\beta$ -7 are receptors for fibronectin. They recognize one or more domains within the alternatively spliced CS-1 and CS-5 regions of fibronectin. They are also receptors for VCAM1. Integrin  $\alpha$ -4/ $\beta$ -1 recognizes the sequence Q-I-D-S in VCAM1. Integrin  $\alpha$ -4/ $\beta$ -7 is also a receptor for MADCAM1. It recognizes the sequence L-D-T in MADCAM1. On activated endothelial cells integrin VLA-4 triggers homotypic aggregation for most VLA-4-positive leukocyte cell lines. It may also participate in cytolytic T-cell interactions with target cells. ITGA4:ITGB1 binds to fractalkine (CX3CL1) and may act as its coreceptor in CX3CR1-dependent fractalkine signaling (PubMed: [23125415](http://www.uniprot.org/citations/23125415)). ITGA4:ITGB1

binds to PLA2G2A via a site (site 2) which is distinct from the classical ligand-binding site (site 1) and this induces integrin conformational changes and enhanced ligand binding to site 1 (PubMed:<a href="http://www.uniprot.org/citations/18635536" target="\_blank">18635536</a>, PubMed:<a href="http://www.uniprot.org/citations/25398877" target="\_blank">25398877</a>). Integrin ITGA4:ITGB1 represses PRKCA-mediated L-type voltage-gated channel Ca(2+) influx and ROCK-mediated calcium sensitivity in vascular smooth muscle cells via its interaction with SVEP1, thereby inhibiting vasoconstriction (PubMed:<a href="http://www.uniprot.org/citations/35802072" target="\_blank">35802072</a>).

#### Cellular Location

Membrane; Single-pass type I membrane protein

#### Tissue Location

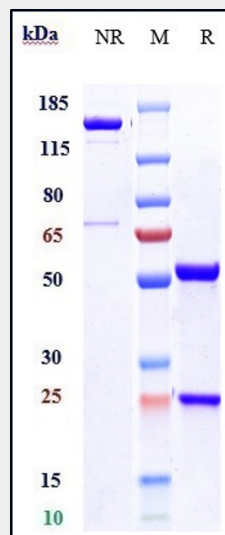
Expressed in vascular smooth muscle cells (at protein level).

### Anti-Integrin $\alpha 4$ / ITGA4 / CD49d Reference Antibody (natalizumab) - Protocols

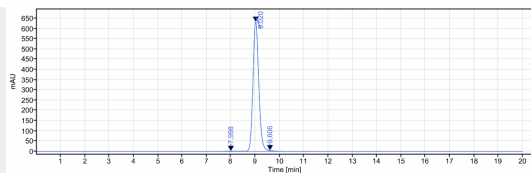
Provided below are standard protocols that you may find useful for product applications.

- [Western Blot](#)
- [Blocking Peptides](#)
- [Dot Blot](#)
- [Immunohistochemistry](#)
- [Immunofluorescence](#)
- [Immunoprecipitation](#)
- [Flow Cytometry](#)
- [Cell Culture](#)

### Anti-Integrin $\alpha 4$ / ITGA4 / CD49d Reference Antibody (natalizumab) - Images



Anti-Integrin  $\alpha 4$  / ITGA4 / CD49d Reference Antibody (natalizumab) on SDS-PAGE under reducing (R) condition. The gel was stained with Coomassie Blue. The purity of the protein is greater than 95%



The purity of Anti-Integrin  $\alpha 4$  / ITGA4 / CD49d Reference Antibody (natalizumab) is more than 98.72 % ,determined by SEC-HPLC.