

**Anti-GM3 Reference Antibody (racotumomab)
Recombinant Antibody
Catalog # APR10294**

Specification

Anti-GM3 Reference Antibody (racotumomab) - Product Information

| | |
|-------------------|------------------------|
| Application | FC, E, FTA |
| Primary Accession | O9UNP4 |
| Reactivity | Human |
| Clonality | Monoclonal |
| Isotype | IgG1 |
| Calculated MW | 145 KDa |

Anti-GM3 Reference Antibody (racotumomab) - Additional Information

Target/Specificity
GM3

Endotoxin
< 0.001EU/ µg,determined by LAL method.

Conjugation
Unconjugated

Expression system
CHO Cell

Format
Purified monoclonal antibody supplied in PBS, pH6.0, without preservative.This antibody is purified through a protein A column.

Anti-GM3 Reference Antibody (racotumomab) - Protein Information

Name ST3GAL5

Synonyms SIAT9

Function
Transfers the sialyl group (N-acetyl-alpha-neuraminy) or NeuAc) from CMP-NeuAc to the non-reducing terminal galactose (Gal) of glycosphingolipids forming gangliosides (important molecules involved in the regulation of multiple cellular processes, including cell proliferation and differentiation, apoptosis, embryogenesis, development, and oncogenesis) (PubMed:16934889, PubMed:9822625). Mainly involved in the biosynthesis of ganglioside GM3 but can also use different glycolipids as substrate acceptors such as D- galactosylceramide (GalCer), asialo-GM2 (GA2) and asialo-GM1 (GA1), although less preferentially than beta-D-Gal-(1->4)-beta-D-Glc-(1<->1)- Cer (LacCer) (PubMed:16934889).

Cellular Location

Golgi apparatus membrane; Single-pass type II membrane protein

Tissue Location

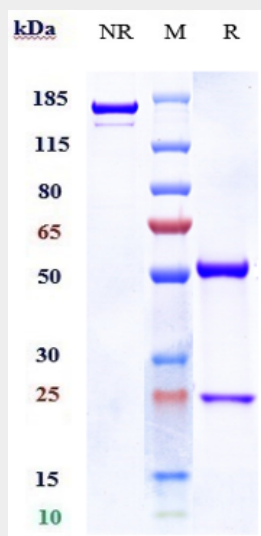
Ubiquitous. High expression in brain, skeletal muscle, placenta, and testis. mRNA widely distributed in human brain, but slightly elevated expression was observed in the cerebral cortex, temporal lobe, and putamen.

Anti-GM3 Reference Antibody (racotumomab) - Protocols

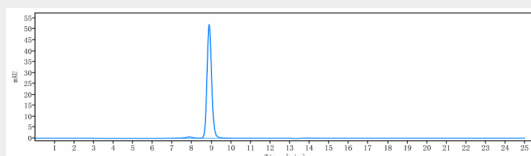
Provided below are standard protocols that you may find useful for product applications.

- [Western Blot](#)
- [Blocking Peptides](#)
- [Dot Blot](#)
- [Immunohistochemistry](#)
- [Immunofluorescence](#)
- [Immunoprecipitation](#)
- [Flow Cytometry](#)
- [Cell Culture](#)

Anti-GM3 Reference Antibody (racotumomab) - Images



Anti-GM3 Reference Antibody (racotumomab) on SDS-PAGE under reducing (R) condition. The gel was stained with Coomassie Blue. The purity of the protein is greater than 90%



The purity of Anti-GM3 Reference Antibody (racotumomab) is more than 95%, determined by SEC-HPLC.