

**Anti-SLC2A8 Reference Antibody (VB1-050)**  
**Recombinant Antibody**  
**Catalog # APR10293****Specification**

---

**Anti-SLC2A8 Reference Antibody (VB1-050) - Product Information**

Application	FC, E, FTA
Primary Accession	<a href="#">O9NY64</a>
Reactivity	Human
Clonality	Monoclonal
Isotype	IgG1
Calculated MW	150 KDa

**Anti-SLC2A8 Reference Antibody (VB1-050) - Additional Information****Target/Specificity**  
SLC2A8**Endotoxin**  
< 0.001EU/ µg, determined by LAL method.**Conjugation**  
Unconjugated**Expression system**  
CHO Cell**Format**  
Purified monoclonal antibody supplied in PBS, pH6.0, without preservative. This antibody is purified through a protein A column.**Anti-SLC2A8 Reference Antibody (VB1-050) - Protein Information****Name** SLC2A8 ([HGNC:13812](#))**Function**  
Insulin-regulated facilitative hexose transporter that mediates the transport of glucose and fructose (By similarity). Facilitates hepatic influx of dietary trehalose, which in turn inhibits glucose and fructose influx triggering a starvation signal and hepatic autophagy through activation of AMPK and ULK1 (PubMed:<a href="http://www.uniprot.org/citations/27922102" target="\_blank">27922102</a>). Also able to mediate the transport of dehydroascorbate.**Cellular Location**  
Cell membrane {ECO:0000250|UniProtKB:Q9JJZ1}; Multi-pass membrane protein. Cytoplasmic vesicle membrane {ECO:0000250|UniProtKB:Q9JJZ1}; Multi-pass membrane protein. Note=Principally intracellular. May move between intracellular vesicles and the plasma membrane. The dileucine internalization motif is critical for intracellular sequestration {ECO:0000250|UniProtKB:Q9JJZ1}

### Tissue Location

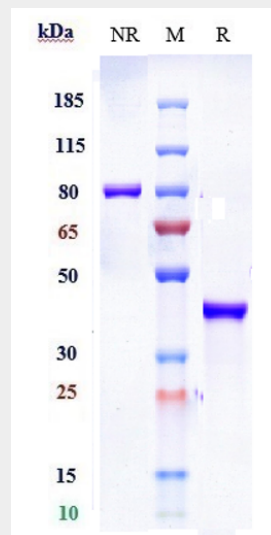
Highly expressed in testis, but not in testicular carcinoma. Lower amounts present in most other tissues

### Anti-SLC2A8 Reference Antibody (VB1-050) - Protocols

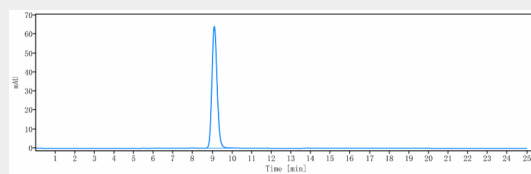
Provided below are standard protocols that you may find useful for product applications.

- [Western Blot](#)
- [Blocking Peptides](#)
- [Dot Blot](#)
- [Immunohistochemistry](#)
- [Immunofluorescence](#)
- [Immunoprecipitation](#)
- [Flow Cytometry](#)
- [Cell Culture](#)

### Anti-SLC2A8 Reference Antibody (VB1-050) - Images



Anti-SLC2A8 Reference Antibody (VB1-050) on SDS-PAGE under reducing (R) condition. The gel was stained with Coomassie Blue. The purity of the protein is greater than 90%



The purity of Anti-SLC2A8 Reference Antibody (VB1-050) is more than 95%, determined by SEC-HPLC.