

**Anti-Integrin a2b3 (ITGA2 & ITGB3) Reference Antibody (tadocizumab)  
Recombinant Antibody  
Catalog # APR10281**

**Specification**

---

**Anti-Integrin a2b3 (ITGA2 & ITGB3) Reference Antibody (tadocizumab) - Product Information**

Application	FC, E, FTA
Primary Accession	<a href="#">P17301 &amp; P05106</a>
Reactivity	Human
Clonality	Monoclonal
Isotype	IgG1
Calculated MW	145.3 KDa

**Anti-Integrin a2b3 (ITGA2 & ITGB3) Reference Antibody (tadocizumab) - Additional Information**

**Target/Specificity**

Integrin a2b3 (ITGA2 & ITGB3)

**Endotoxin**

< 0.001EU/ µg,determined by LAL method.

**Conjugation**

Unconjugated

**Expression system**

CHO Cell

**Format**

Purified monoclonal antibody supplied in 0.1M Glycine,0.2M NaCl,(tris),pH6.0, without preservative.This antibody is purified through a protein A column.

**Anti-Integrin a2b3 (ITGA2 & ITGB3) Reference Antibody (tadocizumab) - Protein Information**

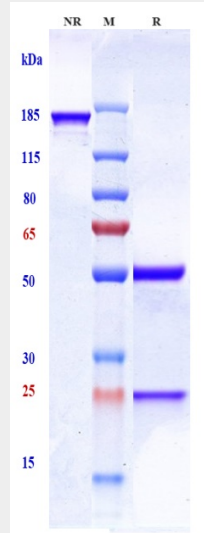
**Anti-Integrin a2b3 (ITGA2 & ITGB3) Reference Antibody (tadocizumab) - Protocols**

Provided below are standard protocols that you may find useful for product applications.

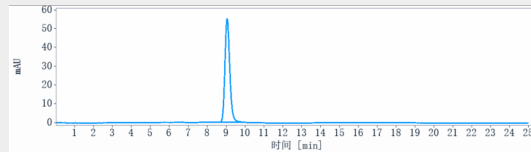
- [Western Blot](#)
- [Blocking Peptides](#)
- [Dot Blot](#)
- [Immunohistochemistry](#)
- [Immunofluorescence](#)
- [Immunoprecipitation](#)

- [Flow Cytometry](#)
- [Cell Culture](#)

### Anti-Integrin $\alpha 2\beta 3$ (ITGA2 & ITGB3) Reference Antibody (tadocizumab) - Images



Anti-Integrin  $\alpha 2\beta 3$  (ITGA2 & ITGB3) Reference Antibody (tadocizumab) on SDS-PAGE under reducing (R) condition. The gel was stained with Coomassie Blue. The purity of the protein is greater than 90%



The purity of Anti-Integrin  $\alpha 2\beta 3$  (ITGA2 & ITGB3) Reference Antibody (tadocizumab) is more than 95% ,determined by SEC-HPLC.