

**Anti-PAC1 Reference Antibody (zelminemab)  
Recombinant Antibody  
Catalog # APR10278**

**Specification**

---

**Anti-PAC1 Reference Antibody (zelminemab) - Product Information**

Application	FC, E, FTA
Primary Accession	<a href="#">Q05923</a>
Reactivity	Cynomolgus, Human, Mouse
Clonality	Monoclonal
Isotype	IgG1
Calculated MW	145 KDa

**Anti-PAC1 Reference Antibody (zelminemab) - Additional Information**

**Target/Specificity**  
PAC1

**Endotoxin**  
< 0.001EU/ µg,determined by LAL method.

**Conjugation**  
Unconjugated

**Expression system**  
CHO Cell

**Format**  
Purified monoclonal antibody supplied in 100mM Pro-Ac, 20mM Arg, pH5.0, without preservative.This antibody is purified through a protein A column.

**Anti-PAC1 Reference Antibody (zelminemab) - Protein Information**

**Name** DUSP2 ([HGNC:3068](#))

**Synonyms** PAC1

**Function**  
Dephosphorylates both phosphorylated Thr and Tyr residues in MAPK1, and dephosphorylation of phosphotyrosine is slightly faster than that of phosphothreonine (PubMed:<a href="http://www.uniprot.org/citations/8107850" target="\_blank">8107850</a>). Can dephosphorylate MAPK1 (By similarity).

**Cellular Location**  
Nucleus.

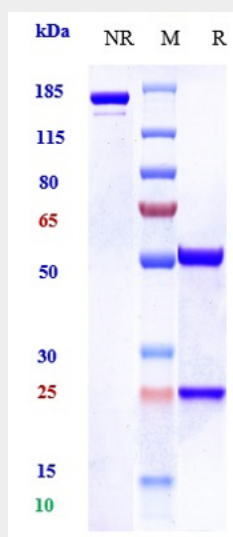
**Tissue Location**  
Expressed in hematopoietic tissues.

## Anti-PAC1 Reference Antibody (zelminemab) - Protocols

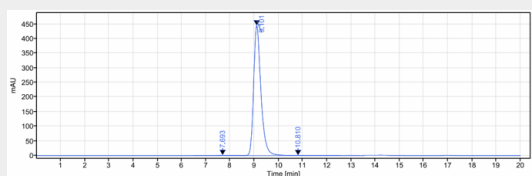
Provided below are standard protocols that you may find useful for product applications.

- [Western Blot](#)
- [Blocking Peptides](#)
- [Dot Blot](#)
- [Immunohistochemistry](#)
- [Immunofluorescence](#)
- [Immunoprecipitation](#)
- [Flow Cytometry](#)
- [Cell Culture](#)

## Anti-PAC1 Reference Antibody (zelminemab) - Images



Anti-PAC1 Reference Antibody (zelminemab) on SDS-PAGE under reducing (R) condition. The gel was stained with Coomassie Blue. The purity of the protein is greater than 95%



The purity of Anti-PAC1 Reference Antibody (zelminemab) is more than 99.15%, determined by SEC-HPLC.