

**Anti-IL-1RL2 / IL-36R Reference Antibody (spesolimab)
Recombinant Antibody
Catalog # APR10275**

Specification

Anti-IL-1RL2 / IL-36R Reference Antibody (spesolimab) - Product Information

| | |
|-------------------|------------------------|
| Application | FC, E, FTA |
| Primary Accession | O9HB29 |
| Reactivity | Cynomolgus, Human |
| Clonality | Monoclonal |
| Isotype | IgG1 |
| Calculated MW | 145 KDa |

Anti-IL-1RL2 / IL-36R Reference Antibody (spesolimab) - Additional Information

Target/Specificity

IL-1RL2 / IL-36R

Endotoxin

< 0.001EU/ µg, determined by LAL method.

Conjugation

Unconjugated

Expression system

CHO Cell

Format

Purified monoclonal antibody supplied in 100mM Pro-Ac, 20mM Arg, pH5.0, without preservative. This antibody is purified through a protein A column.

Anti-IL-1RL2 / IL-36R Reference Antibody (spesolimab) - Protein Information

Name IL1RL2

Synonyms IL1RRP2

Function

Receptor for interleukin-36 (IL36A, IL36B and IL36G). After binding to interleukin-36 associates with the coreceptor IL1RAP to form the interleukin-36 receptor complex which mediates interleukin-36- dependent activation of NF-kappa-B, MAPK and other pathways (By similarity). The IL-36 signaling system is thought to be present in epithelial barriers and to take part in local inflammatory response; it is similar to the IL-1 system. Seems to be involved in skin inflammatory response by induction of the IL-23/IL-17/IL-22 pathway.

Cellular Location

Membrane; Single-pass type I membrane protein

Tissue Location

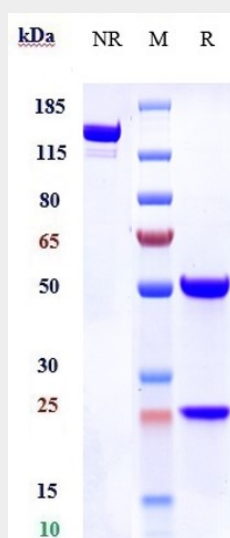
Expressed in synovial fibroblasts and articular chondrocytes. Expressed in keratinocytes and monocyte-derived dendritic cells. Expressed in monocytes and myeloid dendritic cells; at protein level.

Anti-IL-1RL2 / IL-36R Reference Antibody (spesolimab) - Protocols

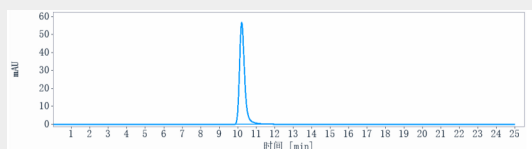
Provided below are standard protocols that you may find useful for product applications.

- [Western Blot](#)
- [Blocking Peptides](#)
- [Dot Blot](#)
- [Immunohistochemistry](#)
- [Immunofluorescence](#)
- [Immunoprecipitation](#)
- [Flow Cytometry](#)
- [Cell Culture](#)

Anti-IL-1RL2 / IL-36R Reference Antibody (spesolimab) - Images



Anti-IL-1RL2 / IL-36R Reference Antibody (spesolimab) on SDS-PAGE under reducing (R) condition. The gel was stained with Coomassie Blue. The purity of the protein is greater than 90%



The purity of Anti-IL-1RL2 / IL-36R Reference Antibody (spesolimab) is more than 95% ,determined by SEC-HPLC.