

**Anti-IL-6 / IFN β 2 Reference Antibody (elsilimomab)
Recombinant Antibody
Catalog # APR10266**

Specification

Anti-IL-6 / IFN β 2 Reference Antibody (elsilimomab) - Product Information

Application	FC, E, FTA
Primary Accession	P05231
Reactivity	Human
Clonality	Monoclonal
Isotype	IgG1
Calculated MW	145 KDa

Anti-IL-6 / IFN β 2 Reference Antibody (elsilimomab) - Additional Information

Target/Specificity

IL-6 / IFN β 2

Endotoxin

< 0.001EU/ μ g,determined by LAL method.

Conjugation

Unconjugated

Expression system

CHO Cell

Format

Purified monoclonal antibody supplied in PBS, pH6.0, without preservative.This antibody is purified through a protein A column.

Anti-IL-6 / IFN β 2 Reference Antibody (elsilimomab) - Protein Information

Name IL6 ([HGNC:6018](#))

Synonyms IFNB2

Function

Cytokine with a wide variety of biological functions in immunity, tissue regeneration, and metabolism. Binds to IL6R, then the complex associates to the signaling subunit IL6ST/gp130 to trigger the intracellular IL6-signaling pathway (Probable). The interaction with the membrane-bound IL6R and IL6ST stimulates 'classic signaling', whereas the binding of IL6 and soluble IL6R to IL6ST stimulates 'trans- signaling'. Alternatively, 'cluster signaling' occurs when membrane- bound IL6:IL6R complexes on transmitter cells activate IL6ST receptors on neighboring receiver cells (Probable).

Cellular Location

Secreted.

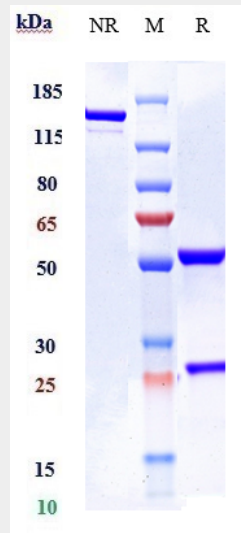
Tissue Location

Produced by skeletal muscle.

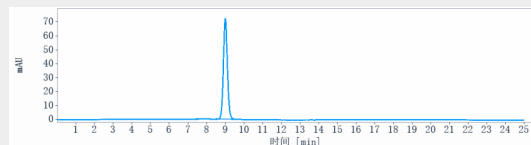
Anti-IL-6 / IFN β 2 Reference Antibody (elsilimomab) - Protocols

Provided below are standard protocols that you may find useful for product applications.

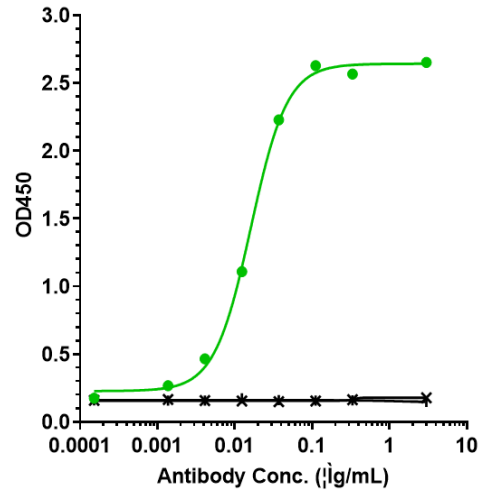
- [Western Blot](#)
- [Blocking Peptides](#)
- [Dot Blot](#)
- [Immunohistochemistry](#)
- [Immunofluorescence](#)
- [Immunoprecipitation](#)
- [Flow Cytometry](#)
- [Cell Culture](#)

Anti-IL-6 / IFN β 2 Reference Antibody (elsilimomab) - Images

Anti-IL-6 / IFN β 2 Reference Antibody (elsilimomab) on SDS-PAGE under reducing (R) condition. The gel was stained with Coomassie Blue. The purity of the protein is greater than 95%



The purity of Anti-IL-6 / IFN β 2 Reference Antibody (elsilimomab) is more than 98.96% ,determined by SEC-HPLC.



Immobilized human IL-6 His at 2 µg/mL can bind Anti-IL-6 / IFN β 2 Reference Antibody (elsilimomab) \square EC50=0.0162 µg/mL